



Qualitative Results for Nonlinear Integro-Dynamic Equations via Integral Inequalities

Martin Bohner¹ · Pallavi S. Scindia² · Sanket Tikare³

Received: 28 December 2021 / Accepted: 5 July 2022
© The Author(s), under exclusive licence to Springer Nature Switzerland AG 2022

Abstract

In this paper, a nonlinear integro-dynamic equation on time scales with local initial condition is considered. The purpose of this paper is to prove existence and uniqueness of solutions and to investigate qualitative properties of solutions of this equation such as boundedness, dependence of solutions on initial conditions, functions, and parameters, and Ulam stability. The analysis is based on the Krasnoselskiĭ fixed point theorem and Gronwall-type dynamic inequalities. For the illustrative purpose of our main results, examples on a nonstandard time scale domain are provided.

Keywords Integro-dynamic equations · Gronwall inequality · Time scales · Existence and uniqueness · Dependence of solutions · Hyers–Ulam stability · Hyers–Ulam–Rassias stability

Mathematics Subject Classification 34A12 · 34D20 · 34N05 · 45J05 · 47H10

1 Introduction

The theory of time scales is a recently developed area. The objective of this theory is to unify the existing theory of continuous and discrete calculus and extend these theories to hybrid continuous-discrete domains. Dynamic equations on time scales have the

✉ Sanket Tikare
sankettikare@rjcollege.edu.in; sanket.tikare@gmail.com

Martin Bohner
bohner@mst.edu

Pallavi S. Scindia
pus.maths@coep.ac.in; scindiaps@gmail.com

- ¹ Department of Mathematics and Statistics, Missouri S&T, Rolla, MO 65409-0020, USA
- ² Department of Mathematics, College of Engineering Pune, Pune, Maharashtra 411 005, India
- ³ Department of Mathematics, Ramniranjan Jhunjhunwala College, Mumbai, Maharashtra 400 086, India

Published online: 29 July 2022

Certified as
TRUE COPY


Principal
Ramniranjan Jhunjhunwala College,
Ghatkopar (W), Mumbai-400086.

potential to describe both continuous and discrete processes. Hence, it became possible to study continuous-discrete time hybrid processes as a single whole. The study of dynamic equations has inspired numerous researchers and has become a prominent field of research. On the other hand, equations that contain both derivatives and integrals of the unknown function, called integro-differential equations, have been taken up by a large number of researchers, and the study of these equations has grown so extensively that it is now one of the most important subjects in the field of mathematical analysis. Indeed, there are many practical situations in which integro-differential equations give a significantly better model than differential or integral equations. Integro-differential equations appear quite naturally in mathematical modelling of several real-world phenomena including cancer treatment [13], ecology [25], engineering [34], epidemiology [16], finance [6, 22], and image processing [1]. Motivated by a large number of important applications in many real-world processes, the theory of integro-differential equations is now well developed.

Recently, there is a trend of studying integro-differential equations in the time scale domain, so-called integro-dynamic equations. This is mainly because of the great use of integro-dynamic equations in describing several nonlocal continuous-discrete hybrid phenomena. Adivar and Raffoul [3], using the topological degree method and Schaefer's fixed point theorem, deduced the existence of periodic solutions of nonlinear system of integro-dynamic equations on periodic time scales and provided several applications to scalar integro-dynamic equations. Also, Adivar et al. [2] employed Schauder's fixed point theorem to generalise and improve results of [17, 23] for systems of nonlinear Volterra integro-differential and integro-difference equations for the time scale domain. Their work requires less restrictive assumptions than the one for continuous and discrete cases. Lupulescu et al. [19] studied several qualitative properties, including asymptotic stabilities and boundedness of solutions of Volterra integro-dynamic equations. Also, Younus and Rahman [40] obtained results of controllability, observability, and stability for a linear system of regressive Volterra integro-dynamic equations. Sevinik-Adigüzel et al. [27] proved the existence of a unique solution of Volterra integro-dynamic equations employing a suitable fixed point theorem in the setting of a complete b -metric space.

Xing et al. [38], by combining the monotone iterative method with contraction mapping principle, studied classical solutions of the nonlinear integro-dynamic equation on a time scale \mathbb{T} of the type

$$\begin{aligned} x^\Delta(t) &= \mathcal{F}\left(t, x(t), \int_0^t \mathcal{K}(t, s)x(s)\Delta s\right), \quad t \in J, \\ x(0) &= x_0, \end{aligned}$$

where $J = [0, a] \cap \mathbb{T}$ for $0, a \in \mathbb{T}$, $\mathcal{F}: J \times \mathbb{R} \times \mathbb{R} \rightarrow \mathbb{R}$ and $\mathcal{K}: J \times J \rightarrow \mathbb{R}$ are continuous functions.

In 2011, an improvement and generalization of the results of [38] was offered by Liu et al. [18]. By replacing $p \in C_{rd}(\mathbb{T}, \mathbb{R})$ on time scales with $p \in L^1_{\mathbb{T}}(\mathbb{T}, \mathbb{R})$, they extended the exponential function e_p and studied weak solutions of the nonlinear

**Certified as
TRUE COPY**

Principal
Ramniranjan Jhunjhunwala College,
Chandigarh (INDIA) Phone: 4000086

integro-dynamic equation of the type

$$x^\Delta(t) + p(t)x^\sigma(t) = \mathcal{F}\left(t, x(t), \int_0^t \mathcal{K}(t, s)\mathcal{W}(s, x(s))\Delta s\right), \quad t \in \mathbb{T}, \quad a \leq t < b,$$

$$x(a) = x_0,$$

where \mathbb{T} is a bounded time scale with $a = \inf \mathbb{T}$, $b = \sup \mathbb{T}$, and the functions $\mathcal{F}: \mathbb{T} \times \mathbb{R} \times \mathbb{R} \rightarrow \mathbb{R}$, $\mathcal{W}: \mathbb{T} \times \mathbb{R} \rightarrow \mathbb{R}$ are Δ -measurable in \mathbb{T} , locally Lipschitz continuous, and $\mathcal{K} \in C_{rd}(\mathbb{T} \times \mathbb{R}, \mathbb{R})$.

The notion of Ulam stability has a wide range of applications in various fields, including numerical analysis, optimization, control theory, neural network etc., when it is quite difficult to find an analytical solution. Ulam stability theory provides an essential tool for investigating the analytical solution as well as a reliable method to approximately solve any dynamic problem. Thus, to study approximate behavior of dynamic equations, one needs to study the aspect of Ulam-type stability. Ulam stability for integro-differential equations have been studied in several papers, [10, 14, 15, 26, 35] to mention a few. Further, many authors have investigated various stability of integro-dynamic equations [4, 24, 39, 40]. Shah and Zada [30] established Ulam stability of a nonlinear Volterra integro-dynamic equation and its adjoint equation by the integrating factor method. It is noteworthy that, recently, in a series of papers, Shah et al. have performed an interesting Ulam stability analysis of several equations including nonlinear impulsive delay dynamic equations on time scales [31, 32], mixed integral dynamic equations with instantaneous and noninstantaneous impulses [28], nonlinear Volterra impulsive integro-delay dynamic equations [33], nonlinear Hammerstein impulsive integro-dynamic equations with delay [29], and nonlinear delay differential equations with fractional integrable impulses [41]. Meanwhile, Hoa et al. [5, 12, 20, 36] investigated several interesting properties, including Ulam stability and data dependence of solutions of various types of fuzzy fractional differential equations.

It is well known that solutions of dynamic equations on time scales depend on the data like initial conditions, functions, and parameters (constants) which appear on the right-hand side of the equation. Evidently, we get different solutions to the same dynamic equation for different data. Thus, from an application and theoretical point of view, it is interesting and reasonably important to know how a solution of a dynamic equation changes if these data change slightly. To the best of our information, up till now, very few papers are available in the literature discussing data dependence of integro-dynamic equations. All these works made us motivated to study qualitative aspects of nonlinear integro-dynamic equations. In this paper, we made an attempt to investigate results concerning existence, uniqueness, data dependence, and Ulam-type stability of nonlinear integro-dynamic equations (NIDEs) of the form

$$x^\Delta(t) + p(t)x^\sigma(t) = \mathcal{F}\left(t, x(t), \int_{t_0}^t \mathcal{H}(t, s, x(s))\Delta s\right), \quad t \in \mathbb{T}^\kappa, \quad (1)$$

subject to the initial condition

$$x(t_0) = x_0 \in \mathbb{R}^n, \quad (2)$$

**Certified as
TRUE COPY**


Principal
Ramniranjan Jhunjhunwala College,
Ghatkopar (W), Mumbai-400086.

where $\mathbb{I} := [t_0, T] \cap \mathbb{T}$ with a time scale $\mathbb{T} \subset \mathbb{R}$, $t_0, T \in \mathbb{T}$ with $t_0 < T$, $x: \mathbb{I} \rightarrow \mathbb{R}^n$ is an unknown function to be determined, $x^\sigma = x \circ \sigma$, x^Δ is the delta derivative of x , $p: \mathbb{I} \rightarrow \mathbb{R}$ is regressive and rd-continuous, $\mathcal{F}: \mathbb{I} \times \mathbb{R}^n \times \mathbb{R}^n \rightarrow \mathbb{R}^n$ is rd-continuous in its first variable and continuous in its second and third variables, $\mathcal{H}: \mathbb{I} \times \mathbb{I} \times \mathbb{R}^n \rightarrow \mathbb{R}^n$ is rd-continuous in its first and second variables and continuous in its third variable. In addition, both \mathcal{F} and \mathcal{H} are assumed to be nonlinear functions.

The innovative idea in the present paper is to consider a new type of nonlinear integro-dynamic equations on time scales (1)–(2) and then, by employing a Gronwall-type dynamic inequality, investigate all qualitative properties mentioned above, with just Lipschitz-type conditions on functions \mathcal{F} and \mathcal{H} involved in the equation. The main advantage of employing the Gronwall-type dynamic inequality is that it demands fewer restrictions on the functions involved in the equation than any other approach.

The present paper is divided into six sections. After this introduction, in Sect. 2, preliminary notions pertinent to this paper are given. In Sect. 3, we derive an equivalent integral equation to the dynamic problem (1)–(2) and prove existence and uniqueness of solutions to the dynamic problem (1)–(2). Results of boundedness and data dependence of solutions are derived in Sect. 4. Section 5 deals with the investigation of Ulam stability for the dynamic problem (1)–(2). Here, with the help of MATLAB® code, we provide a graph depicting the solution. Finally, conclusions and remarks on further study are added in Sect. 6.

2 Preliminaries

In what follows, \mathbb{T} denotes a time scale, which is an arbitrary nonempty closed subset of the set of real numbers \mathbb{R} . Below we summarize some notions connected to the theory of time scales, which are pertinent to the present paper. These materials are standard and can be found in [7, 8]. For a given time scale \mathbb{T} , we derive a new set \mathbb{T}^κ as follows: $\mathbb{T}^\kappa = \mathbb{T} \setminus \{\max \mathbb{T}\}$ if $\max \mathbb{T} < \infty$, otherwise $\mathbb{T}^\kappa = \mathbb{T}$.

Definition 2.1 We say that $f: \mathbb{T} \rightarrow \mathbb{R}^n$ is delta differentiable at $t \in \mathbb{T}^\kappa$ if there exists $f^\Delta(t) \in \mathbb{R}^n$, a so-called delta derivative of f , with the following property: For any $\varepsilon > 0$ there is a neighbourhood N of t such that

$$\|f(\sigma(t)) - f(s) - f^\Delta(t)(\sigma(t) - s)\|_n \leq \varepsilon |\sigma(t) - s| \text{ for all } s \in N.$$

Definition 2.2 We say that $f: \mathbb{T} \rightarrow \mathbb{R}^n$ is rd-continuous if it is continuous at every right-dense point or maximal point in \mathbb{T} and its left sided limits exist at left-dense points in \mathbb{T} . The symbol $C_{\text{rd}}(\mathbb{T}, \mathbb{R}^n)$ will be used for the set of all such functions.

Definition 2.3 We say that $F: \mathbb{T} \rightarrow \mathbb{R}^n$ is an antiderivative of $f: \mathbb{T} \rightarrow \mathbb{R}^n$ if $F^\Delta(t) = f(t)$ for all $t \in \mathbb{T}^\kappa$. In this case, we define the Cauchy delta integral of f by

$$\int_{t_0}^t f(s) \Delta s := F(t) - F(t_0), \text{ where } t_0 \in \mathbb{T}.$$

Certified as
TRUE COPY



Principal
Ramniranjan Jhunjhunwala College,
Ghatkopar (W), Mumbai-400086.

Definition 2.4 We say that $p: \mathbb{T} \rightarrow \mathbb{R}$ is regressive if $1 + \mu(t)p(t) \neq 0$ for all $t \in \mathbb{T}$, where $\mu: \mathbb{T} \rightarrow \mathbb{R}^+$ is the graininess function. The symbol $\mathcal{R}(\mathbb{T}, \mathbb{R})$ will be used for the set of all rd-continuous regressive functions.

Definition 2.5 We say that $p: \mathbb{T} \rightarrow \mathbb{R}$ is positively regressive if $1 + \mu(t)p(t) > 0$ for all $t \in \mathbb{T}$. The symbol $\mathcal{R}^+(\mathbb{T}, \mathbb{R})$ will be used for the set of all rd-continuous positively regressive functions.

Definition 2.6 For $p \in \mathcal{R}(\mathbb{T}, \mathbb{R})$, the generalized exponential function $e_p(t, s)$ on the time scale \mathbb{T} is defined as

$$e_p(t, s) := \begin{cases} \exp\left(\int_s^t \left(\frac{\text{Log}|1 + \mu(\tau)p(\tau)|}{\mu(\tau)}\right) \Delta\tau\right) & \text{if } \mu(\tau) \neq 0, \\ \exp\left(\int_s^t p(\tau) \Delta\tau\right) & \text{if } \mu(\tau) = 0. \end{cases}$$

For $p, q \in \mathcal{R}(\mathbb{T}, \mathbb{R})$, we define the following.

$$p \oplus q := p + q + \mu pq, \quad \ominus p := \frac{-p}{1 + \mu p}, \quad p \ominus q := p \oplus (\ominus q).$$

Remark 2.1 Below we state some of the properties of the exponential function that are used in our investigation. For $p \in \mathcal{R}(\mathbb{T}, \mathbb{R})$ and $r, s, t \in \mathbb{T}$, we have

- (i) $e_0(t, s) \equiv 1$ and $e_p(t, t) \equiv 1$;
- (ii) $e_p(s, t) = e_{\ominus p}(t, s)$;
- (iii) $e_p(t, s) = 1/e_p(s, t)$;
- (iv) $e_p(t, r)e_p(r, s) = e_p(t, s)$.

We recall the extended Gronwall inequality, which is an essential tool in our investigation.

Theorem 2.1 (See [37, Theorem 2]) Let $y, f \in C_{\text{rd}}(\mathbb{T}, \mathbb{R}^+)$ with f a nondecreasing function and $g, h \in \mathcal{R}^+(\mathbb{T}, \mathbb{R})$ with $g \geq 0, h \geq 0$. If

$$y(t) \leq f(t) + \int_a^t h(s) \left[y(s) + \int_a^s g(\tau) y(\tau) \Delta\tau \right] \Delta s \quad \text{for } t \in \mathbb{T}^\kappa,$$

then the following two inequalities hold:

- (a) $y(t) \leq f(t) \left[1 + \int_a^t h(s) e_{h+g}(s, a) \Delta s \right]$ for $t \in \mathbb{T}^\kappa$.
- (b) $y(t) \leq f(t) e_{h+g}(t, a)$ for $t \in \mathbb{T}^\kappa$.

In particular, if $f(t) \equiv 0$, then $y(t) \equiv 0$ for $t \in \mathbb{T}^\kappa$.

Theorem 2.2 (Arzelà–Ascoli theorem (See [42, Lemma 4])) A subset of $C_{\text{rd}}(\mathbb{I}, \mathbb{R})$ which is both equicontinuous and bounded is relatively compact.

Theorem 2.3 (Krasnoselskiĭ fixed point theorem (See [21, Theorem 11.2])) Let B be a Banach space, $C \subset B$ nonempty, closed and convex. Let $F_1, F_2: C \rightarrow B$ be such that:

Certified as
TRUE COPY


Principal
Ramnirajan Manjhumwala College,
Ghatkopar (W), Mumbai-400086.

- (i) F_1 is continuous and $F_1(C)$ is relatively compact.
- (ii) F_2 is a contraction.
- (iii) $F_1(x) + F_2(y) \in C$ for all $x, y \in C$.

Then there exists $\bar{x} \in C$ such that $F_1(\bar{x}) + F_2(\bar{x}) = \bar{x}$.

In this paper, we employ the following notations. Let $C_{\text{rd}}(\mathbb{I}, \mathbb{R}^n)$ be the family of all rd-continuous functions defined on \mathbb{I} and taking values in \mathbb{R}^n , which is a Banach space when coupled with the norm $\|\cdot\|$ defined as $\|x\| := \sup_{t \in \mathbb{I}} \|x(t)\|_n$. We let

$$E := \sup_{s, t \in \mathbb{I}} |e_{\ominus p}(t, s)| > 0$$

and

$$\eta := \sup_{t \in \mathbb{I}} \int_{t_0}^t |e_{\ominus p}(t, s)| \Delta s > 0.$$

3 Existence and Uniqueness of Solutions

Lemma 3.1 Let $p \in \mathcal{R}(\mathbb{I}, \mathbb{R})$, $t_0 \in \mathbb{T}$, $x_0 \in \mathbb{R}^n$, $\mathcal{F} \in C_{\text{rd}}(\mathbb{I} \times \mathbb{R}^n \times \mathbb{R}^n, \mathbb{R}^n)$, and $\mathcal{H} \in C_{\text{rd}}(\mathbb{I} \times \mathbb{I} \times \mathbb{R}^n, \mathbb{R}^n)$. Then, x is a solution of (1)–(2) if and only if x is a solution of the delta integral equation

$$x(t) = e_{\ominus p}(t, t_0)x_0 + \int_{t_0}^t e_{\ominus p}(t, s) \mathcal{F} \left(s, x(s), \int_{t_0}^s \mathcal{H}(s, \tau, x(\tau)) \Delta \tau \right) \Delta s, \quad t \in \mathbb{I}^{\kappa}. \quad (3)$$

Proof Suppose x is a solution of (1)–(2). Then, multiplying (1) by $e_p(t, t_0)$, we get

$$(e_p(\cdot, t_0)x)^\Delta(t) = e_p(t, t_0) \mathcal{F} \left(t, x(t), \int_{t_0}^t \mathcal{H}(t, \tau, x(\tau)) \Delta \tau \right).$$

Now, integrating the above equation from t_0 to t and then multiplying both sides by $e_{\ominus p}(t, t_0)$, we obtain (3). Conversely, suppose that (3) holds. Letting $t = t_0$ in (3), we find that (2) holds. Then, multiplying (3) by $e_p(t, t_0)$, we obtain

$$e_p(t, t_0)x(t) = x(t_0) + \int_{t_0}^t e_p(s, t_0) \mathcal{F} \left(s, x(s), \int_{t_0}^s \mathcal{H}(s, \tau, x(\tau)) \Delta \tau \right) \Delta s.$$

Now, differentiating the above equation, we get

$$(e_p(\cdot, t_0)x)^\Delta(t) = e_p(t, t_0) \mathcal{F} \left(t, x(t), \int_{t_0}^t \mathcal{H}(t, \tau, x(\tau)) \Delta \tau \right).$$

That is, (1) holds. This completes the proof. \square

Certified as
TRUE COPY

Principal

Ramniranjan Jhunjhunwala College,
Ghatkopar (W), Mumbai-400086.

Throughout this paper, we use following hypotheses to obtain our results:

- (H₁) Let $p \in \mathcal{R}(\mathbb{I}, \mathbb{R})$.
- (H₂) Let $\mathcal{F}: \mathbb{I} \times \mathbb{R}^n \times \mathbb{R}^n \rightarrow \mathbb{R}^n$ be rd-continuous in its first variable and continuous in its second and third variables such that

$$\|\mathcal{F}(t, x_1, y_1) - \mathcal{F}(t, x_2, y_2)\|_n \leq L_{\mathcal{F}}(t)(\|x_1 - x_2\|_n + \|y_1 - y_2\|_n) \quad (4)$$

for all $t \in \mathbb{I}$ and $x_i, y_i \in \mathbb{R}^n$ ($i = 1, 2$), where $L_{\mathcal{F}} \in \mathcal{R}^+(\mathbb{I}, \mathbb{R}^+)$.

- (H₃) Let $\mathcal{H}: \mathbb{I} \times \mathbb{I} \times \mathbb{R}^n \rightarrow \mathbb{R}^n$ be rd-continuous in its first and second variables and continuous in its third variable such that

$$\|\mathcal{H}(t, s, x_1) - \mathcal{H}(t, s, x_2)\|_n \leq L_{\mathcal{H}}(s)\|x_1 - x_2\|_n \quad (5)$$

for all $t, s \in \mathbb{I}$ and $x_i \in \mathbb{R}^n$ ($i = 1, 2$), where $L_{\mathcal{H}} \in \mathcal{R}^+(\mathbb{I}, \mathbb{R}^+)$.

- (H₄) $\eta < \frac{1}{L_{\mathcal{F}}^*(1 + L_{\mathcal{H}}^*(T - t_0))}$, where $L_{\mathcal{F}}^* := \sup_{t \in \mathbb{I}} L_{\mathcal{F}}(t)$ and $L_{\mathcal{H}}^* := \sup_{s \in \mathbb{I}} L_{\mathcal{H}}(s)$.

- (H₅) $E < \frac{1}{2L_{\mathcal{F}}^*(T - t_0)(1 + L_{\mathcal{H}}^*(T - t_0))}$, with $L_{\mathcal{F}}^*$ and $L_{\mathcal{H}}^*$ as in (H₄).

Theorem 3.2 Suppose (H₁) – (H₄) hold. If

$$M_{\mathcal{F}} := \sup\{\|\mathcal{F}(s, 0, \psi)\|_n : s \in \mathbb{I}, \psi \in \mathbb{R}^n\} < \infty, \quad (6)$$

then the dynamic problem (1)–(2) has a unique solution in $C_{rd}(\mathbb{I}, \mathbb{R}^n)$.

Proof Existence: Consider a subset $B_r \subset C_{rd}$ such that

$$B_r := \{x \in C_{rd}(\mathbb{I}, \mathbb{R}^n) : \|x\| \leq r\},$$

where $r = 2(E\|x(t_0)\|_n + \eta M_{\mathcal{F}})$. Next, define the operator $\mathcal{W}: B_r \rightarrow C_{rd}$ by

$$\mathcal{W}[x](t) = e_{\ominus p}(t, t_0)x(t_0) + \int_{t_0}^t e_{\ominus p}(t, s)\mathcal{F}\left(s, x(s), \int_{t_0}^s \mathcal{H}(s, \tau, x(\tau))\Delta\tau\right)\Delta s. \quad (7)$$

Clearly, this operator \mathcal{W} is well-defined on B_r . According to Lemma 3.1, a fixed point of \mathcal{W} is a solution of (1)–(2). In order to employ the Krasnoselskiĭ fixed point theorem, Theorem 2.3, we express (7) as

$$\mathcal{W}[x](t) = \mathcal{W}_1[x](t) + \mathcal{W}_2[x](t),$$

where

$$\mathcal{W}_1[x](t) := e_{\ominus p}(t, t_0)x(t_0) + \int_{t_0}^t e_{\ominus p}(t, s)\mathcal{F}\left(s, 0, \int_{t_0}^s \mathcal{H}(s, \tau, 0)\Delta\tau\right)\Delta s \quad (8)$$

Certified as
TRUE COPY


Principal

Ramniranjan Jhanjhanwala College,
Ghatkopar (W), Mumbai-400086.

and

$$\begin{aligned} \mathcal{W}_2[x](t) := & \int_{t_0}^t e_{\ominus p}(t, s) \left[\mathcal{F} \left(s, x(s), \int_{t_0}^s \mathcal{H}(s, \tau, x(\tau)) \Delta \tau \right) \right. \\ & \left. - \mathcal{F} \left(s, 0, \int_{t_0}^s \mathcal{H}(s, \tau, 0) \Delta \tau \right) \right] \Delta s. \end{aligned} \quad (9)$$

We show that $\mathcal{W}_1: B_r \rightarrow C_{rd}$ is completely continuous and $\mathcal{W}_2: B_r \rightarrow C_{rd}$ is a contraction. Further, we show that if $x, y \in B_r$, then $\mathcal{W}_1[x] + \mathcal{W}_2[y] \in B_r$. The proof will be given in the following steps.

Assertion 1. $\mathcal{W}_1: B_r \rightarrow C_{rd}$ is completely continuous.

It is clear that \mathcal{W}_1 is continuous. We show that \mathcal{W}_1 is bounded. For $x \in B_r$

$$\begin{aligned} & \|\mathcal{W}_1[x]\| \\ &= \sup_{t \in \mathbb{I}} \left\| e_{\ominus p}(t, t_0)x(t_0) + \int_{t_0}^t e_{\ominus p}(t, s) \mathcal{F} \left(s, 0, \int_{t_0}^s \mathcal{H}(s, \tau, 0) \Delta \tau \right) \Delta s \right\|_n \\ &\leq \sup_{t \in \mathbb{I}} \left\{ |e_{\ominus p}(t, t_0)| \|x(t_0)\|_n + \int_{t_0}^t |e_{\ominus p}(t, s)| \left\| \mathcal{F} \left(s, 0, \int_{t_0}^s \mathcal{H}(s, \tau, 0) \Delta \tau \right) \right\|_n \Delta s \right\} \\ &\leq E \|x(t_0)\|_n + \eta M_{\mathcal{F}}. \end{aligned}$$

Thus, $\mathcal{W}_1[x]$ is bounded for $x \in B_r$. Next, for equicontinuity of \mathcal{W}_1 , let $t_1, t_2 \in \mathbb{I}$ and $x \in B_r$. Then

$$\begin{aligned} & \|\mathcal{W}_1[x](t_2) - \mathcal{W}_1[x](t_1)\|_n \\ &\leq |e_{\ominus p}(t_2, t_0) - e_{\ominus p}(t_1, t_0)| \|x(t_0)\|_n \\ &\quad + \left\| \int_{t_0}^{t_2} e_{\ominus p}(t_2, s) \mathcal{F} \left(s, 0, \int_{t_0}^s \mathcal{H}(s, \tau, 0) \Delta \tau \right) \Delta s \right. \\ &\quad \left. - \int_{t_0}^{t_1} e_{\ominus p}(t_1, s) \mathcal{F} \left(s, 0, \int_{t_0}^s \mathcal{H}(s, \tau, 0) \Delta \tau \right) \Delta s \right\|_n \\ &\leq |e_{\ominus p}(t_2, t_0) - e_{\ominus p}(t_1, t_0)| \|x(t_0)\|_n \\ &\quad + |e_{\ominus p}(t_2, t_0) - e_{\ominus p}(t_1, t_0)| \int_{t_0}^{t_1} |e_p(s, t_0)| \left\| \mathcal{F} \left(s, 0, \int_{t_0}^s \mathcal{H}(s, \tau, 0) \Delta \tau \right) \right\|_n \Delta s \\ &\quad + |e_{\ominus p}(t_2, t_0)| \int_{\min\{t_1, t_2\}}^{\max\{t_1, t_2\}} |e_p(s, t_0)| \left\| \mathcal{F} \left(s, 0, \int_{t_0}^s \mathcal{H}(s, \tau, 0) \Delta \tau \right) \right\|_n \Delta s \\ &\leq |e_{\ominus p}(t_2, t_0) - e_{\ominus p}(t_1, t_0)| \left(\|x(t_0)\|_n + M_{\mathcal{F}} \int_{t_0}^{t_1} |e_p(s, t_0)| \Delta s \right) \\ &\quad + M_{\mathcal{F}} \int_{\min\{t_1, t_2\}}^{\max\{t_1, t_2\}} |e_{\ominus p}(t_2, s)| \Delta s \\ &\leq |e_{\ominus p}(t_2, t_0) - e_{\ominus p}(t_1, t_0)| (\|x(t_0)\|_n + \eta M_{\mathcal{F}}) + EM_{\mathcal{F}} |t_2 - t_1|. \end{aligned}$$

Certified as
TRUE COPY

Principal

Ramniranjan Jhunjhunwala College,
Ghatkopar (W), Mumbai-400086.

It is seen that the right-hand side of the above inequality tends to zero as $|t_2 - t_1| \rightarrow 0$. Thus, $\mathcal{W}_1[x]$ is equicontinuous for $x \in B_r$, and a standard application of the Arzelà-Ascoli theorem, Theorem 2.2, guarantees that \mathcal{W}_1 is compact and subsequently, is completely continuous.

Assertion 2. $\mathcal{W}_2: B_r \rightarrow C_{rd}$ is a contraction.

For $x, y \in B_r$, we have

$$\begin{aligned}
& \|\mathcal{W}_2[x](t) - \mathcal{W}_2[y](t)\|_n \\
& \leq \int_{t_0}^t |e_{\Theta p}(t, s)| \left\| \mathcal{F} \left(s, x(s), \int_{t_0}^s \mathcal{H}(s, \tau, x(\tau)) \Delta \tau \right) \right. \\
& \quad \left. - \mathcal{F} \left(s, y(s), \int_{t_0}^s \mathcal{H}(s, \tau, y(\tau)) \Delta \tau \right) \right\|_n \Delta s \\
& \leq \int_{t_0}^t |e_{\Theta p}(t, s)| L_{\mathcal{F}}(s) \left(\|x(s) - y(s)\|_n + \int_{t_0}^s L_{\mathcal{H}}(\tau) \|x(\tau) - y(\tau)\|_n \Delta \tau \right) \Delta s \\
& \leq \int_{t_0}^t |e_{\Theta p}(t, s)| L_{\mathcal{F}}(s) (1 + L_{\mathcal{H}}^*(s - t_0)) \|x(s) - y(s)\|_n \Delta s \\
& \leq L_{\mathcal{F}}^* (1 + L_{\mathcal{H}}^*(T - t_0)) \int_{t_0}^t |e_{\Theta p}(t, s)| \|x(s) - y(s)\|_n \Delta s \\
& \leq L_{\mathcal{F}}^* (1 + L_{\mathcal{H}}^*(T - t_0)) \int_{t_0}^t |e_{\Theta p}(t, s)| \Delta s \|x - y\| \\
& \leq \eta L_{\mathcal{F}}^* (1 + L_{\mathcal{H}}^*(T - t_0)) \|x - y\|.
\end{aligned}$$

In view of (H₄), we obtain that \mathcal{W}_2 is contraction.

Assertion 3. If $x, y \in B_r$, then $\mathcal{W}_1[x] + \mathcal{W}_2[y] \in B_r$.

Let $x, y \in B_r$. Then for $t \in \mathbb{I}$

$$\begin{aligned}
& \|\mathcal{W}_1[x](t) + \mathcal{W}_2[y](t)\|_n \\
& = \left\| e_{\Theta p}(t, t_0)x(t_0) + \int_{t_0}^t e_{\Theta p}(t, s) \mathcal{F} \left(s, 0, \int_{t_0}^s \mathcal{H}(s, \tau, 0) \Delta \tau \right) \Delta s \right. \\
& \quad \left. + \int_{t_0}^t e_{\Theta p}(t, s) \left[\mathcal{F} \left(s, y(s), \int_{t_0}^s \mathcal{H}(s, \tau, y(\tau)) \Delta \tau \right) \right. \right. \\
& \quad \left. \left. - \mathcal{F} \left(s, 0, \int_{t_0}^s \mathcal{H}(s, \tau, 0) \Delta \tau \right) \right] \Delta s \right\|_n \\
& \leq |e_{\Theta p}(t, t_0)| \|x(t_0)\|_n + \int_{t_0}^t |e_{\Theta p}(t, s)| \left\| \mathcal{F} \left(s, 0, \int_{t_0}^s \mathcal{H}(s, \tau, 0) \Delta \tau \right) \right\|_n \Delta s \\
& \quad + \int_{t_0}^t |e_{\Theta p}(t, s)| \left\| \mathcal{F} \left(s, y(s), \int_{t_0}^s \mathcal{H}(s, \tau, y(\tau)) \Delta \tau \right) \right. \\
& \quad \left. - \mathcal{F} \left(s, 0, \int_{t_0}^s \mathcal{H}(s, \tau, 0) \Delta \tau \right) \right\|_n \Delta s \\
& \leq E \|x(t_0)\|_n + \eta M_{\mathcal{F}} + (\eta L_{\mathcal{F}}^* (1 + L_{\mathcal{H}}^*(T - t_0))) r.
\end{aligned}$$

Certified as
TRUE COPY



Principal
Ramnirajan Jhunjhunwala College,
Ghatkopar (W), Mumbai-400086.

Using the definition of r and (H₄), we write

$$\|\mathcal{W}_1[x](t) + \mathcal{W}_2[y](t)\|_n \leq r \quad \text{for all } t \in \mathbb{I}.$$

This gives

$$\|\mathcal{W}_1[x] + \mathcal{W}_2[y]\| \leq r \quad \text{for } x, y \in B_r.$$

This shows that $\mathcal{W}_1[x] + \mathcal{W}_2[y] \in B_r$ for $x, y \in B_r$.

Thus, all the conditions of Theorem 2.3 are hold and we can deduce that the operator $\mathcal{W} = \mathcal{W}_1 + \mathcal{W}_2$ has a fixed point in B_r which is a solution of (1)–(2). It remains to prove the uniqueness of the solution of (1)–(2).

Uniqueness: Assume that $x, y \in B_r$ are two solutions of (1)–(2). Then for any $t \in \mathbb{I}$, (H₂) and (H₃) yield the estimates

$$\begin{aligned} & \|x(t) - y(t)\|_n \\ & \leq \int_{t_0}^t |e_{\ominus p}(t, s)| \left\| \mathcal{F} \left(s, x(s), \int_{t_0}^s \mathcal{H}(s, \tau, x(\tau)) \Delta \tau \right) \right. \\ & \quad \left. - \mathcal{F} \left(s, y(s), \int_{t_0}^s \mathcal{H}(s, \tau, y(\tau)) \Delta \tau \right) \right\|_n \Delta s \\ & \leq \int_{t_0}^s EL_{\mathcal{F}}(s) \left(\|x(s) - y(s)\|_n + \int_{t_0}^s L_{\mathcal{H}}(\tau) \|x(\tau) - y(\tau)\|_n \Delta \tau \right) \Delta s. \end{aligned}$$

Now, in view Theorem 2.1, we obtain

$$\|x(t) - y(t)\|_n \leq 0 \quad \text{for all } t \in \mathbb{I},$$

that is, $x = y$. This completes the proof. \square

Remark 3.1 If $\mathcal{H} = 0$, then Theorem 3.2 coincides with [9, Theorem 4.1].

Corollary 3.1 Suppose (H₁) – (H₃) and (H₅) hold. If (6) holds, then the dynamic problem (1)–(2) has a unique solution.

Remark 3.2 Both Theorem 3.2 and Corollary 3.1 also hold if (H₂) and (H₃) are replaced by the following.

(H_{L2}) Let $\mathcal{F}: \mathbb{I} \times \mathbb{R}^n \times \mathbb{R}^n \rightarrow \mathbb{R}^n$ be rd-continuous in its first variable and continuous in its second and third variables such that

$$\|\mathcal{F}(t, x_1, y_1) - \mathcal{F}(t, x_2, y_2)\|_n \leq L_{\mathcal{F}}(t)(\|x_1 - x_2\|_n + \|y_1 - y_2\|_n) \quad (10)$$

for all $t \in \mathbb{I}$ and $\|x_i\|_n < r$, $\|y_i\|_n < r$ ($i = 1, 2$), with $L_{\mathcal{F}} \in \mathcal{R}^+(\mathbb{I}, \mathbb{R}^+)$.

(H_{L3}) Let $\mathcal{H}: \mathbb{I} \times \mathbb{I} \times \mathbb{R}^n \rightarrow \mathbb{R}^n$ be rd-continuous in first and second variables and continuous in third variable such that

$$\|\mathcal{H}(t, s, x_1) - \mathcal{H}(t, s, x_2)\|_n \leq L_{\mathcal{H}}(s)\|x_1 - x_2\|_n \quad (11)$$

Certified as
TRUE COPY

Principal
Ramniranjan Jhunjhunwala College,
Ghatkopar (W), Mumbai-400086.

for all $t, s \in \mathbb{I}$ and $\|x_i\|_n < r, \|y_i\|_n < r$ ($i = 1, 2$), with $L_{\mathcal{H}} \in \mathcal{R}^+(\mathbb{I}, \mathbb{R}^+)$.

Remark 3.3 If $\|\mathcal{F}(t, u, v)\|_n \leq K$ for all $t \in \mathbb{I}$ and $u, v \in \mathbb{R}^n$, then based on Theorem 3.2, it is seen that any solution x of (1)–(2) satisfies

$$\begin{aligned} & \|x(t_2) - x(t_1)\|_n \\ &= \left\| e_{\ominus p}(t_2, t_0)x(t_0) + \int_{t_0}^{t_2} e_{\ominus p}(t_2, s)\mathcal{F}\left(s, x(s), \int_{t_0}^s \mathcal{H}(s, \tau, x(\tau))\Delta\tau\right)\Delta s \right. \\ &\quad \left. - e_{\ominus p}(t_1, t_0)x(t_0) - \int_{t_0}^{t_1} e_{\ominus p}(t_1, s)\mathcal{F}\left(s, x(s), \int_{t_0}^s \mathcal{H}(s, \tau, x(\tau))\Delta\tau\right)\Delta s \right\|_n \\ &\leq |e_{\ominus p}(t_2, t_0) - e_{\ominus p}(t_1, t_0)|\|x(t_0)\|_n \\ &\quad + \left\| \int_{t_0}^{t_2} e_{\ominus p}(t_2, s)\mathcal{F}\left(s, x(s), \int_{t_0}^s \mathcal{H}(s, \tau, x(\tau))\Delta\tau\right)\Delta s \right. \\ &\quad \left. - \int_{t_0}^{t_1} e_{\ominus p}(t_1, s)\mathcal{F}\left(s, x(s), \int_{t_0}^s \mathcal{H}(s, \tau, x(\tau))\Delta\tau\right)\Delta s \right\|_n \\ &\leq |e_{\ominus p}(t_2, t_0) - e_{\ominus p}(t_1, t_0)|\|x(t_0)\|_n \\ &\quad + |e_{\ominus p}(t_2, t_0) - e_{\ominus p}(t_1, t_0)| \int_{t_0}^{t_1} |e_p(s, t_0)| \left\| \mathcal{F}\left(s, x(s), \int_{t_0}^s \mathcal{H}(s, \tau, x(\tau))\Delta\tau\right) \right\|_n \Delta s \\ &\quad + |e_{\ominus p}(t_2, t_0)| \int_{\min\{t_1, t_2\}}^{\max\{t_1, t_2\}} |e_p(s, t_0)| \left\| \mathcal{F}\left(s, x(s), \int_{t_0}^s \mathcal{H}(s, \tau, x(\tau))\Delta\tau\right) \right\|_n \Delta s \\ &\leq |e_{\ominus p}(t_2, t_0) - e_{\ominus p}(t_1, t_0)| (\|x(t_0)\|_n + EK(T - t_0)) + EK|t_2 - t_1| \quad \text{for all } t_1, t_2 \in \mathbb{I}. \end{aligned}$$

We now give an example of an NIDE of the type (1) such that all conditions of Theorem 3.2 are satisfied.

Example 3.3 Let \mathbb{T} be the time scale defined as

$$\mathbb{T} := \bigcup_{k=0}^{\infty} [2k, 2k + 1].$$

This time scale appears in mathematical models of population dynamics of certain species that reproduce at discrete time intervals and whose life span is one unit of time. Consider the NIDE

**Certified as
TRUE COPY**



Principal
Ramniranjan Jhunjhunwala College,
Ghatkopar (W), Mumbai-400086.

$$x^\Delta(t) + x^\sigma(t) = L_{\mathcal{F}} \sin \left(x(t) + \int_{t_0}^t (\sin x(s) + \cos x(s) + 2t) \Delta s \right), \quad t \in [t_0, T]_{\mathbb{T}}^{\kappa}, \quad (12)$$

with $x_0 = 0$, where

$$L_{\mathcal{F}} \in \left(0, \frac{1}{(2e)^{m+1}(2m+1)(4m+3)} \right). \quad (13)$$

We take $t_0 = 0$, $T = 2m + 1$, $m \in \mathbb{N}$. Here $p(t) \equiv 1$. So $p \in \mathcal{R}$, and (H_1) holds. Moreover,

$$\mathcal{H}(t, s, x) = \sin x + \cos x + 2t \quad \text{and} \quad \mathcal{F}(t, x, y) = L_{\mathcal{F}} \sin(x + y).$$

We note that (H_2) satisfied, since

$$\begin{aligned} |\mathcal{F}(t, x_1(t), y_1(t)) - \mathcal{F}(t, x_2(t), y_2(t))| &= L_{\mathcal{F}} |\sin(x_1(t) + y_1(t)) - \sin(x_2(t) + y_2(t))| \\ &\leq L_{\mathcal{F}} |x_1(t) - x_2(t) + y_1(t) - y_2(t)| \\ &\leq L_{\mathcal{F}} (|x_1(t) - x_2(t)| + |y_1(t) - y_2(t)|). \end{aligned}$$

Further,

$$\begin{aligned} |\mathcal{H}(t, s, x_1(s)) - \mathcal{H}(t, s, x_2(s))| &\leq |\sin x_1(s) - \sin x_2(s)| + |\cos x_1(s) - \cos x_2(s)| \\ &\leq 2|x_1(s) - x_2(s)|. \end{aligned}$$

Hence, (H_3) is satisfied with $L_{\mathcal{H}} = 2$. Now, since

$$\eta = \sup_{t \in [0, 2m+1]_{\mathbb{T}}} \int_0^t e_{\ominus 1}(t, s) \Delta s = (2e)^{m+1}(2m+1),$$

we find that (H_4) satisfied with $L_{\mathcal{H}} = 2$ and $L_{\mathcal{F}}$ given in (13). Thus, all conditions of Theorem 3.2 are satisfied and therefore, by Theorem 3.2, the NIDE (12) has a unique solution on $[0, 2m + 1]_{\mathbb{T}}$.

4 Estimate and Data Dependence for Solutions

Throughout the rest of the paper, we denote $\alpha = EL_{\mathcal{F}} + L_{\mathcal{H}}$.

Our first result in this section concerns the *a priori* estimate for the possible solutions to (1)–(2).

Theorem 4.1 *Suppose $(H_1) - (H_3)$ hold. If x is the solution of (1)–(2) defined by Theorem 3.2, then*

$$\|x\| \leq (E\|x_0\|_n + \eta M_{\mathcal{F}}) e_{\alpha}(T, t_0). \quad (14)$$

**Certified as
TRUE COPY**


Principal

Ramniranjan Jhunjhunwala College,
Ghatkopar (W), Mumbai-400086.

Proof According to Lemma 3.1, $x(t)$ is given by

$$x(t) = e_{\ominus p}(t, t_0)x_0 + \int_{t_0}^t e_{\ominus p}(t, s)\mathcal{F}\left(s, x(s), \int_{t_0}^s \mathcal{H}(s, \tau, x(\tau))\Delta\tau\right)\Delta s.$$

We rewrite the above equation as

$$\begin{aligned} x(t) &= e_{\ominus p}(t, t_0)x_0 + \int_{t_0}^t e_{\ominus p}(t, s)\left[\mathcal{F}\left(s, x(s), \int_{t_0}^s \mathcal{H}(s, \tau, x(\tau))\Delta\tau\right)\right. \\ &\quad \left.-\mathcal{F}\left(s, 0, \int_{t_0}^s \mathcal{H}(s, \tau, 0)\Delta\tau\right)\right]\Delta s \\ &\quad + \int_{t_0}^t e_{\ominus p}(t, s)\mathcal{F}\left(s, 0, \int_{t_0}^s \mathcal{H}(s, \tau, 0)\Delta\tau\right)\Delta s. \end{aligned}$$

Now, (H₂) and (H₃) yields

$$\|x(t)\|_n \leq E\|x_0\|_n + \eta M_{\mathcal{F}} + \int_{t_0}^t EL_{\mathcal{F}}(s)\left(\|x(s)\|_n + \int_{t_0}^s L_{\mathcal{H}}(\tau)\|x(\tau)\|_n\Delta\tau\right)\Delta s.$$

Finally, employing the Gronwall inequality given in Theorem 2.1 (b) and keeping in mind the increasing nature of the exponential function in the first argument, we obtain

$$\|x(t)\|_n \leq (E\|x_0\|_n + \eta M_{\mathcal{F}})e_{\alpha}(T, t_0),$$

and (14) follows easily. \square

Remark 4.1 Under the conditions of Theorem 4.1 with the same calculation, and keeping in mind the inequality from Theorem 2.1 (a), we infer that the solution x of (1)–(2) satisfies the estimate

$$\|x\| \leq (E\|x_0\| + \eta M_{\mathcal{F}})\left[1 + \int_{t_0}^T EL_{\mathcal{F}}(s)e_{\alpha}(s, t_0)\Delta s\right].$$

Example 4.2 From Example 3.3, according to Lemma 3.1, the unique solution of NIDE (12) is given by

$$\begin{aligned} x(t) &= L_{\mathcal{F}} \int_0^t e_{\ominus 1}(t, s) \sin\left(x(s) + \int_0^s [\sin(x(\tau)) + \cos(x(\tau)) + 2s]\Delta\tau\right)\Delta s \\ &= L_{\mathcal{F}} \int_0^t e_{\ominus 1}(t, s) \sin\left(x(s) + \int_0^s \sin(x(\tau))\Delta\tau + \int_0^s \cos(x(\tau))\Delta\tau + 2s^2\right)\Delta s. \end{aligned}$$

Keeping in mind (13) and the boundedness of 'sine' function, we obtain

$$\|x\| \leq L_{\mathcal{F}}(2e)^{m+1}(2m + 1)$$

**Certified as
TRUE COPY**



Principal

Ramniranjan Jhunjhunwala College,
Ghatkopar (W), Mumbai-400086.

$$< \frac{1}{4m+3}.$$

Hence the solution of NIDE (12) is bounded and the bound is $\frac{1}{4m+3}$.

We now turn our attention to the results concerning dependence of solutions on various quantities. Below we prove the dependence of solutions on initial conditions. For this, first we consider the dynamic equation

$$y^\Delta(t) + p(t)y^\sigma(t) = \mathcal{F}\left(t, y(t), \int_{t_0}^t \mathcal{H}(t, s, y(s))\Delta s\right), \quad t \in \mathbb{T}^k, \quad (15)$$

subject to the initial condition

$$y(t_0) = y_0 \in \mathbb{R}^n. \quad (16)$$

Theorem 4.3 (Dependence on initial conditions) *Assume that the functions \mathcal{F} and \mathcal{H} in NIDEs (1) and (15) satisfy (H_2) and (H_3) . If x and y are the solutions of (1)–(2) and (15)–(16), respectively, then the inequality*

$$\|x - y\| \leq E\|x_0 - y_0\|e_\alpha(T, t_0) \quad (17)$$

holds. Additionally, if $\|x_0 - y_0\|_n \leq \delta$ for some $\delta > 0$, then we have

$$\|x - y\| \leq E\delta e_\alpha(T, t_0). \quad (18)$$

Proof In view of Lemma 3.1, the solutions x and y of (1)–(2) and (15)–(16), respectively, are given by

$$x(t) = e_{\ominus p}(t, t_0)x_0 + \int_{t_0}^t e_{\ominus p}(t, s)\mathcal{F}\left(s, x(s), \int_{t_0}^s \mathcal{H}(s, \tau, x(\tau))\Delta\tau\right)\Delta s$$

and

$$y(t) = e_{\ominus p}(t, t_0)y_0 + \int_{t_0}^t e_{\ominus p}(t, s)\mathcal{F}\left(s, y(s), \int_{t_0}^s \mathcal{H}(s, \tau, y(\tau))\Delta\tau\right)\Delta s.$$

Then for each $t \in \mathbb{T}$, we have

$$\begin{aligned} & \|x(t) - y(t)\|_n \\ & \leq |e_{\ominus p}(t, t_0)|\|x_0 - y_0\|_n + \int_{t_0}^t |e_{\ominus p}(t, s)| \left\| \mathcal{F}\left(s, x(s), \int_{t_0}^s \mathcal{H}(s, \tau, x(\tau))\Delta\tau\right) \right. \\ & \quad \left. - \mathcal{F}\left(s, y(s), \int_{t_0}^s \mathcal{H}(s, \tau, y(\tau))\Delta\tau\right) \right\|_n \Delta s. \end{aligned}$$

Certified as
TRUE COPY



Principal
Ramniranjan Jhunjunwala College,
Ghatkopar (W), Mumbai-400086.

Now, (H₂) and (H₃) lead to

$$\begin{aligned} & \|x(t) - y(t)\|_n \\ & \leq E \|x_0 - y_0\|_n \\ & \quad + \int_{t_0}^t E L_{\mathcal{F}}(s) \left(\|x(s) - y(s)\|_n + \int_{t_0}^s L_{\mathcal{H}}(\tau) \|x(\tau) - y(\tau)\|_n \Delta\tau \right) \Delta s. \end{aligned}$$

Employing the Gronwall inequality given in Theorem 2.1 (b) and keeping in mind the increasing nature of the exponential function in the first argument, we obtain, for all $t \in \mathbb{I}$

$$\|x(t) - y(t)\|_n \leq E \|x_0 - y_0\|_n e_{\alpha}(T, t_0).$$

Indeed, (17) and (18) follow from the above inequality. \square

Remark 4.2 Under the conditions of Theorem 4.3 with the same calculation, and keeping in mind the inequality from Theorem 2.1 (a), we obtain the inequality

$$\|x - y\| \leq E\delta \left[1 + \int_{t_0}^T E L_{\mathcal{F}}(s) e_{\alpha}(s, t_0) \Delta s \right],$$

where $\|x_0 - y_0\|_n \leq \delta$ for some $\delta > 0$.

Next, to obtain a result concerning the dependency of solution on functions involved in the dynamic equation, we consider a variant form of the original NIDEs

$$z^{\Delta}(t) + p(t)z^{\sigma}(t) = \widehat{\mathcal{F}}\left(t, z(t), \int_{t_0}^t \widehat{\mathcal{H}}(t, s, z(s)) \Delta s\right), \quad t \in \mathbb{I}^{\kappa}, \quad (19)$$

subject to the initial condition

$$z(t_0) = z_0 \in \mathbb{R}^n. \quad (20)$$

Theorem 4.4 (Dependence on functions) *Assume that the functions \mathcal{F} and \mathcal{H} in NIDE (1) satisfy (H₂) and (H₃). Further, assume that there exists a constant $S > 0$ such that*

$$\|\mathcal{F}(t, u_1, v_1) - \widehat{\mathcal{F}}(t, u_2, v_2)\| \leq S$$

for all $t \in \mathbb{I}$ and $u_i, v_i \in \mathbb{R}^n$ ($i = 1, 2$). If x and z are the solutions of (1)–(2) and (19)–(20), respectively, then

$$\|x - z\| \leq (E\delta + \eta S) e_{\alpha}(T, t_0), \quad (21)$$

where $\|x_0 - z_0\|_n \leq \delta$ for some $\delta > 0$.

Certified as
TRUE COPY



Principal
Ramniranjan Jhaughanwala College,
Ghatkopar (W), Mumbai-400086.

Proof Since x and z are the solutions of (1)–(2) and (19)–(20), respectively, using Lemma 3.1, we write for $t \in \mathbb{I}$,

$$\begin{aligned}
& \|x(t) - z(t)\|_n \\
& \leq |e_{\ominus p}(t, t_0)| \|x_0 - z_0\|_n \\
& \quad + \int_{t_0}^t |e_{\ominus p}(t, s)| \left\| \mathcal{F} \left(s, x(s), \int_{t_0}^s \mathcal{H}(s, \tau, x(\tau)) \Delta \tau \right) \right. \\
& \quad \left. - \widehat{\mathcal{F}} \left(s, z(s), \int_{t_0}^s \widehat{\mathcal{H}}(s, \tau, z(\tau)) \Delta \tau \right) \right\|_n \Delta s \\
& \leq |e_{\ominus p}(t, t_0)| \|x_0 - z_0\|_n \\
& \quad + \int_{t_0}^t |e_{\ominus p}(t, s)| \left\| \mathcal{F} \left(s, x(s), \int_{t_0}^s \mathcal{H}(s, \tau, x(\tau)) \Delta \tau \right) \right. \\
& \quad \left. - \mathcal{F} \left(s, z(s), \int_{t_0}^s \mathcal{H}(s, \tau, z(\tau)) \Delta \tau \right) \right\|_n \Delta s \\
& \quad + \int_{t_0}^t |e_{\ominus p}(t, s)| \left\| \mathcal{F} \left(s, z(s), \int_{t_0}^s \mathcal{H}(s, \tau, z(\tau)) \Delta \tau \right) \right. \\
& \quad \left. - \widehat{\mathcal{F}} \left(s, z(s), \int_{t_0}^s \widehat{\mathcal{H}}(s, \tau, z(\tau)) \Delta \tau \right) \right\|_n \Delta s \\
& \leq E \|x_0 - z_0\|_n \\
& \quad + \int_{t_0}^t EL_{\mathcal{F}}(s) \left(\|x(s) - z(s)\|_n + \int_{t_0}^s L_{\mathcal{H}}(\tau) \|x(\tau) - z(\tau)\|_n \Delta \tau \right) \Delta s \\
& \quad + S \int_{t_0}^t |e_{\ominus p}(t, s)| \Delta s \\
& \leq E \|x_0 - z_0\|_n + \int_{t_0}^t EL_{\mathcal{F}}(s) (\|x(s) - z(s)\|_n \\
& \quad + \int_{t_0}^s L_{\mathcal{H}}(\tau) \|x(\tau) - z(\tau)\|_n \Delta \tau) \Delta s + \eta S.
\end{aligned}$$

Employing the Gronwall inequality given in Theorem 2.1 (b) and keeping in mind the increasing nature of the exponential function in the first argument, we obtain, for all $t \in \mathbb{I}$

$$\|x(t) - z(t)\|_n \leq (E \|x_0 - z_0\|_n + \eta S) e_{\alpha}(T, t_0), \quad (22)$$

and (21) follows easily. \square

Remark 4.3 Under the conditions of Theorem 4.3 with the same calculation, and keeping in mind the inequality from Theorem 2.1 (a), we obtain the inequality

$$\|x - z\| \leq (E\delta + \eta S) \left[1 + \int_{t_0}^T EL_{\mathcal{F}}(s) e_{\alpha}(s, t_0) \Delta s \right],$$

where $\|x_0 - z_0\|_n \leq \delta$ for some $\delta > 0$.

Certified as
TRUE COPY

Principal
Ramniranjan Jhunjhunwala College,
Ghatkopar (W), Mumbai-400086.

Finally, to prove the result related with dependence on parameters, we consider NIDEs involving parameters of the form

$$x^\Delta(t) + p(t)x^\sigma(t) = \mathcal{F}\left(t, \gamma_1, x(t), \int_{t_0}^t \mathcal{H}(t, s, x(s))\Delta s\right), \quad t \in \mathbb{I}^k; \quad (23)$$

$$x^\Delta(t) + p(t)x^\sigma(t) = \mathcal{F}\left(t, \gamma_2, x(t), \int_{t_0}^t \mathcal{H}(t, s, x(s))\Delta s\right), \quad t \in \mathbb{I}^k, \quad (24)$$

subject to the initial condition

$$x(t_0) = x_0 \in \mathbb{R}^n, \quad (25)$$

where $\gamma_1, \gamma_2 \in \mathbb{R}$.

Theorem 4.5 (Dependence on parameters) *Let (H_3) hold. Assume that there exist $\Omega, \Omega_\gamma > 0$ and $\tilde{L}_{\mathcal{F}} \in \mathcal{R}^+(\mathbb{I}, \mathbb{R}^+)$ such that*

$$\|\mathcal{F}(t, \gamma_i, u_1, v_1) - \mathcal{F}(t, \gamma_i, u_2, v_2)\|_n \leq \Omega_\gamma \tilde{L}_{\mathcal{F}}(t) (\|u_1 - u_2\|_n + \|v_1 - v_2\|_n)$$

and

$$\|\mathcal{F}(t, \gamma_1, u_1, v_1) - \mathcal{F}(t, \gamma_2, u_1, v_1)\|_n \leq \Omega |\gamma_1 - \gamma_2|$$

for all $t \in \mathbb{I}$, $\gamma_i \in \mathbb{R}$ and $u_i, v_i \in \mathbb{R}^n$ ($i = 1, 2$). If x_1 and x_2 are the solutions of (23)–(25) and (24)–(25), respectively, then

$$\|x_1 - x_2\| \leq \eta \Omega |\gamma_1 - \gamma_2| e_{\tilde{\alpha}}(T, t_0), \quad \text{where } \tilde{\alpha} = E \Omega_\gamma \tilde{L}_{\mathcal{F}} + L_{\mathcal{H}}. \quad (26)$$

Proof Since x_1 and x_2 are the solutions of (23)–(25) and (24)–(25), respectively, using Lemma 3.1, we can write for all $t \in \mathbb{I}$,

$$\begin{aligned} & \|x_1(t) - x_2(t)\|_n \\ &= \left\| \int_{t_0}^t e_{\ominus p}(t, s) \left[\mathcal{F}\left(s, \gamma_1, x_1(s), \int_{t_0}^s \mathcal{H}(s, \tau, x_1(\tau))\Delta \tau\right) \right. \right. \\ & \quad \left. \left. - \mathcal{F}\left(s, \gamma_2, x_2(s), \int_{t_0}^s \mathcal{H}(s, \tau, x_2(\tau))\Delta \tau\right) \right] \Delta s \right\|_n. \end{aligned}$$

Then

$$\begin{aligned} & \|x_1(t) - x_2(t)\|_n \\ & \leq \int_{t_0}^t |e_{\ominus p}(t, s)| \left\| \mathcal{F}\left(s, \gamma_1, x_1(s), \int_{t_0}^s \mathcal{H}(s, \tau, x_1(\tau))\Delta \tau\right) \right. \\ & \quad \left. - \mathcal{F}\left(s, \gamma_2, x_2(s), \int_{t_0}^s \mathcal{H}(s, \tau, x_2(\tau))\Delta \tau\right) \right\|_n \Delta s \end{aligned}$$

**Certified as
TRUE COPY**



Principal
Ramniranjan Jhunjhunwala College,
Ghatkopar (W), Mumbai-400086.

$$\begin{aligned}
&\leq \int_{t_0}^t |e_{\Theta p}(t, s)| \left\| \mathcal{F} \left(s, \gamma_1, x_1(s), \int_{t_0}^s \mathcal{H}(s, \tau, x_1(\tau)) \Delta \tau \right) \right. \\
&\quad \left. - \mathcal{F} \left(s, \gamma_2, x_1(s), \int_{t_0}^s \mathcal{H}(s, \tau, x_1(\tau)) \Delta \tau \right) \right\|_n \Delta s \\
&\quad + \int_{t_0}^t |e_{\Theta p}(t, s)| \left\| \mathcal{F} \left(s, \gamma_2, x_1(s), \int_{t_0}^s \mathcal{H}(s, \tau, x_1(\tau)) \Delta \tau \right) \right. \\
&\quad \left. - \mathcal{F} \left(s, \gamma_2, x_2(s), \int_{t_0}^s \mathcal{H}(s, \tau, x_2(\tau)) \Delta \tau \right) \right\|_n \Delta s \\
&\leq \Omega |\gamma_1 - \gamma_2| \int_{t_0}^t |e_{\Theta p}(t, s)| \Delta s \\
&\quad + \int_{t_0}^t |e_{\Theta p}(t, s)| \Omega_\gamma \tilde{L}_{\mathcal{F}}(s) \left(\|x_1(s) - x_2(s)\|_n + \int_{t_0}^s L_{\mathcal{H}}(\tau) \|x_1(\tau) - x_2(\tau)\|_n \right) \Delta s \\
&\leq \eta \Omega |\gamma_1 - \gamma_2| \\
&\quad + \int_{t_0}^t E \Omega_\gamma \tilde{L}_{\mathcal{F}}(s) \left(\|x_1(s) - x_2(s)\|_n + \int_{t_0}^s L_{\mathcal{H}}(\tau) \|x_1(\tau) - x_2(\tau)\|_n \right) \Delta s.
\end{aligned}$$

Employing the Gronwall inequality given in Theorem 2.1 (b) and keeping in mind the increasing nature of the exponential function in the first argument, we obtain (26). \square

Remark 4.4 Under the conditions of Theorem 4.5 with the same calculation, and keeping in mind the inequality from Theorem 2.1 (a), we obtain the inequality

$$\|x_1 - x_2\| \leq \eta \Omega |\gamma_1 - \gamma_2| \left[1 + \int_{t_0}^T E \Omega_\gamma \tilde{L}_{\mathcal{F}}(s) e_{\tilde{\alpha}}(s, t_0) \Delta s \right].$$

5 Ulam Stability

In this section, we shall investigate Ulam stability for NIDE (1). For this, first we shall introduce the following definitions.

Definition 5.1 We say that NIDE (1) has Hyers–Ulam stability if there exists a real number $C_{\mathcal{F}} > 0$ such that for each $\varepsilon > 0$ and for each $y \in C_{\text{rd}}^1(\mathbb{I}, \mathbb{R}^n)$ satisfying

$$\left\| y^\Delta(t) + p(t)y^\sigma(t) - \mathcal{F} \left(t, y(t), \int_{t_0}^t \mathcal{H}(t, s, y(s)) \Delta s \right) \right\|_n \leq \varepsilon \quad \text{for all } t \in \mathbb{I}, \quad (27)$$

there exists a solution $x \in C_{\text{rd}}(\mathbb{I}, \mathbb{R}^n)$ of (1) with

$$\|y(t) - x(t)\|_n \leq \varepsilon C_{\mathcal{F}} \quad \text{for all } t \in \mathbb{I}.$$

Here $C_{\mathcal{F}}$ is a so-called HUS constant.

Certified as
TRUE COPY



Principal
Ramniranjan Jhunjhunwala College,
Ghatkopar (W), Mumbai-400086.

Definition 5.2 We say that NIDE (1) has generalised Hyers–Ulam stability if there exists a function $\theta_{\mathcal{F}} \in C(\mathbb{R}^+, \mathbb{R}^+)$ with $\theta_{\mathcal{F}}(0) = 0$, such that for each $y \in C_{\text{rd}}^1(\mathbb{I}, \mathbb{R}^n)$ satisfying (27), there exists a solution $x \in C_{\text{rd}}(\mathbb{I}, \mathbb{R}^n)$ of (1) with

$$\|y(t) - x(t)\|_n \leq \theta_{\mathcal{F}}(\varepsilon) \quad \text{for all } t \in \mathbb{I}.$$

Definition 5.3 Let \mathcal{N} be a family of positive, nondecreasing rd-continuous real-valued functions defined on \mathbb{I} . We say that NIDE (1) has Hyers–Ulam–Rassias stability of type \mathcal{N} if for each $\psi \in \mathcal{N}$, there exists $C_{\mathcal{F}, \psi} > 0$ such that for each $y \in C_{\text{rd}}^1(\mathbb{I}, \mathbb{R}^n)$ satisfying

$$\left\| y^\Delta(t) + p(t)y^\sigma(t) - \mathcal{F}\left(t, y(t), \int_{t_0}^t \mathcal{H}(t, s, y(s))\Delta s\right) \right\|_n \leq \varepsilon\psi(t) \quad \text{for all } t \in \mathbb{I}^\kappa, \quad (28)$$

there exists a solution $x \in C_{\text{rd}}(\mathbb{I}, \mathbb{R}^n)$ of (1) with

$$\|y(t) - x(t)\|_n \leq C_{\mathcal{F}, \psi} \varepsilon \psi(t) \quad \text{for all } t \in \mathbb{I}.$$

Here $C_{\mathcal{F}, \psi}$ is a so-called HURS $_{\mathcal{N}}$ constant.

Definition 5.4 Let \mathcal{N} be a family of positive, nondecreasing rd-continuous real-valued functions defined on \mathbb{I} . We say that NIDE (1) has generalised Hyers–Ulam–Rassias stability of type \mathcal{N} if for each $\psi \in \mathcal{N}$, there exists $C_{\mathcal{F}, \psi} > 0$ such that for each $y \in C_{\text{rd}}^1(\mathbb{I}, \mathbb{R}^n)$ satisfying

$$\left\| y^\Delta(t) + p(t)y^\sigma(t) - \mathcal{F}\left(t, y(t), \int_{t_0}^t \mathcal{H}(t, s, y(s))\Delta s\right) \right\|_n \leq \psi(t) \quad \text{for all } t \in \mathbb{I}^\kappa, \quad (29)$$

there exists a solution $x \in C_{\text{rd}}(\mathbb{I}, \mathbb{R}^n)$ of (1) with

$$\|y(t) - x(t)\|_n \leq C_{\mathcal{F}, \psi} \psi(t) \quad \text{for all } t \in \mathbb{I}.$$

Here $C_{\mathcal{F}, \psi}$ is a so-called GHURS $_{\mathcal{N}}$ constant.

Remark 5.1 A function $y \in C_{\text{rd}}^1(\mathbb{I}, \mathbb{R}^n)$ is a solution of (28) if there exists a function $\mathcal{G} \in C_{\text{rd}}^1(\mathbb{I}, \mathbb{R}^n)$ (which depends on y) such that

- (i) $\|\mathcal{G}(t)\|_n \leq \varepsilon\psi(t) \quad \text{for all } t \in \mathbb{I}$,
- (ii) $y^\Delta(t) + p(t)y^\sigma(t) = \mathcal{F}\left(t, y(t), \int_{t_0}^t \mathcal{H}(t, s, y(s))\Delta s\right) + \mathcal{G}(t) \quad \text{for all } t \in \mathbb{I}^\kappa$.

Theorem 5.1 Let (H_1) hold and the functions \mathcal{F} and \mathcal{H} in NIDE (1) satisfy (H_2) and (H_3) . Assume that there exists $\lambda > 0$ such that for every $\psi \in \mathcal{N}$ and for all $t \in \mathbb{I}$,

$$\int_{t_0}^t |e_{\ominus p}(t, s)|\psi(s)\Delta s \leq \lambda\psi(t). \quad (30)$$

**Certified as
TRUE COPY**



Principal
Ramniranjan Jhunjhunwala College,
Ghatkopar (W), Mumbai-400086.

Then the NIDE (1) has Hyers–Ulam–Rassias stability of type \mathcal{N} with $HURS_{\mathcal{N}}$ constant $\lambda e_{\alpha}(T, t_0)$.

Proof Let $y \in C_{rd}^1(\mathbb{I}, \mathbb{R}^n)$ satisfy (28). Then, by Remark 5.1, we have

$$y^{\Delta}(t) + p(t)y^{\sigma}(t) = \mathcal{F}\left(t, y(t), \int_{t_0}^t \mathcal{H}(t, s, y(s))\Delta s\right) + \mathcal{G}(t) \quad \text{for all } t \in \mathbb{I}^{\kappa}.$$

Now, Lemma 3.1 implies that

$$\begin{aligned} y(t) &= e_{\Theta p}(t, t_0) y(t_0) + \int_{t_0}^t e_{\Theta p}(t, s) \left[\mathcal{F}\left(s, y(s), \int_{t_0}^s \mathcal{H}(s, \tau, y(\tau))\Delta \tau\right) + \mathcal{G}(s) \right] \Delta s, \\ &= e_{\Theta p}(t, t_0) y(t_0) + \int_{t_0}^t e_{\Theta p}(t, s) \mathcal{F}\left(s, y(s), \int_{t_0}^s \mathcal{H}(s, \tau, y(\tau))\Delta \tau\right) \Delta s \\ &\quad + \int_{t_0}^t e_{\Theta p}(t, s) \mathcal{G}(s) \Delta s \end{aligned}$$

for all $t \in \mathbb{I}$. Then

$$\begin{aligned} &\left\| y(t) - e_{\Theta p}(t, t_0) y(t_0) - \int_{t_0}^t e_{\Theta p}(t, s) \mathcal{F}\left(s, y(s), \int_{t_0}^s \mathcal{H}(s, \tau, y(\tau))\Delta \tau\right) \Delta s \right\|_n \\ &\leq \varepsilon \int_{t_0}^t |e_{\Theta p}(t, s)| \psi(s) \Delta s. \end{aligned}$$

Thus, in view of (30), we obtain

$$\begin{aligned} &\left\| y(t) - e_{\Theta p}(t, t_0) y(t_0) - \int_{t_0}^t e_{\Theta p}(t, s) \mathcal{F}\left(s, y(s), \int_{t_0}^s \mathcal{H}(s, \tau, y(\tau))\Delta \tau\right) \Delta s \right\|_n \\ &\leq \varepsilon \lambda \psi(t) \end{aligned} \quad (31)$$

for all $t \in \mathbb{I}$. Let $x \in C_{rd}(\mathbb{I}, \mathbb{R}^n)$ be the solution of the dynamic problem

$$\begin{aligned} x^{\Delta}(t) + p(t)x^{\sigma}(t) &= \mathcal{F}\left(t, x(t), \int_{t_0}^t \mathcal{H}(t, s, x(s))\Delta s\right), \quad t \in \mathbb{I}^{\kappa}, \\ x(t_0) &= y(t_0). \end{aligned}$$

Then, we have

$$\begin{aligned} x(t) &= e_{\Theta p}(t, t_0) y(t_0) \\ &\quad + \int_{t_0}^t e_{\Theta p}(t, s) \mathcal{F}\left(s, x(s), \int_{t_0}^s \mathcal{H}(s, \tau, x(\tau))\Delta \tau\right) \Delta s \quad \text{for all } t \in \mathbb{I}. \end{aligned} \quad (32)$$

From (31), (32), and using (H₂) and (H₃), we have

**Certified as
TRUE COPY**


Principal

Ramniranjan Jhunjhunwala College,
Ghatkopar (W), Mumbai-400086.

$$\begin{aligned}
& \|y(t) - x(t)\|_n \tag{33} \\
& \leq \left\| y(t) - e_{\ominus p}(t, t_0)y(t_0) - \int_{t_0}^t e_{\ominus p}(t, s) \mathcal{F} \left(s, y(s), \int_0^s \mathcal{H}(s, \tau, y(\tau)) \Delta \tau \right) \Delta s \right\|_n \\
& \quad + \int_{t_0}^t |e_{\ominus p}(t, s)| \left\| \mathcal{F} \left(s, y(s), \int_{t_0}^s \mathcal{H}(s, \tau, y(\tau)) \Delta \tau \right) \right. \\
& \quad \left. - \mathcal{F} \left(s, x(s), \int_{t_0}^s \mathcal{H}(s, \tau, x(\tau)) \Delta \tau \right) \right\|_n \Delta s \\
& \leq \varepsilon \lambda \psi(t) + \int_{t_0}^t EL_{\mathcal{F}}(s) \left(\|y(s) - x(s)\|_n + \int_{t_0}^s L_{\mathcal{H}}(\tau) [\|y(\tau) - x(\tau)\|_n] \Delta \tau \right) \Delta s. \tag{34}
\end{aligned}$$

Employing the Gronwall inequality given in Theorem 2.1 (b) and keeping in mind the increasing nature of the exponential function in the first argument, we obtain

$$\|y(t) - x(t)\|_n \leq \varepsilon \lambda \psi(t) e_{\alpha}(T, t_0).$$

This yields

$$\|y(t) - x(t)\|_n \leq \varepsilon C_{\mathcal{F}, \psi} \psi(t) \quad \text{for all } t \in \mathbb{I},$$

where $C_{\mathcal{F}, \psi} := \lambda e_{\alpha}(T, t_0)$. Thus NIDE (1) has Hyers–Ulam–Rassias stability of type \mathcal{N} with $\text{HURS}_{\mathcal{N}}$ constant $\lambda e_{\alpha}(T, t_0)$. \square

Corollary 5.1 *Let (H_1) hold and the functions \mathcal{F} and \mathcal{H} in NIDE (1) satisfy the conditions of Theorem 5.1. Then NIDE (1) has generalized Hyers–Ulam–Rassias stability of type \mathcal{N} with $\text{GHURS}_{\mathcal{N}}$ constant $\lambda e_{\alpha}(T, t_0)$.*

Proof Taking $\varepsilon = 1$ in the proof of Theorem 5.1 we obtain that NIDE (1) has generalized Hyers–Ulam–Rassias stability of type \mathcal{N} with $\text{GHURS}_{\mathcal{N}}$ constant $\lambda e_{\alpha}(T, t_0)$. \square

Remark 5.2 Employing the inequality from Theorem 2.1 (a) to (33) we infer that NIDE (1) has Hyers–Ulam–Rassias stability of type \mathcal{N} as well as generalized Hyers–Ulam–Rassias stability of type \mathcal{N} with

$$\lambda \left[1 + \int_{t_0}^T EL_{\mathcal{F}}(s) e_{\alpha}(T, t_0) \Delta s \right]$$

being both the $\text{HURS}_{\mathcal{N}}$ and $\text{GHURS}_{\mathcal{N}}$ constant.

Corollary 5.2 *Let (H_1) hold and the functions \mathcal{F} and \mathcal{H} in NIDE (1) satisfies (H_2) and (H_3) . Then NIDE (1) has Hyers–Ulam stable stability with HUS constant $\eta e_{\alpha}(T, t_0)$.*

Proof Take $\psi(t) \equiv 1$. Then

$$\int_{t_0}^t |e_{\ominus p}(t, s)| \psi(s) \Delta s \leq \eta \quad \text{for all } t \in \mathbb{I},$$

Certified as
TRUE COPY


Principal

Ramniranjan Jhunjhunwala College,
Ghatkopar (W), Mumbai-400086.

and from the proof of Theorem 5.1, we obtain

$$\|y(t) - x(t)\|_n \leq \varepsilon C_{\mathcal{F}} \quad \text{for all } t \in \mathbb{I}. \quad (35)$$

This proves that (1) has Hyers–Ulam stability with HUS constant $C_{\mathcal{F}} := \eta e_{\alpha}(T, t_0)$. \square

Corollary 5.3 *Let (H_1) hold and the functions \mathcal{F} and \mathcal{H} in (1) satisfy (H_2) and (H_3) . Then (1) has generalized Hyers–Ulam stability of type \mathcal{N} .*

Proof Define $\theta_{\mathcal{F}}(\varepsilon) := \varepsilon C_{\mathcal{F}}$. Clearly $\theta_{\mathcal{F}} \in C(\mathbb{R}^+, \mathbb{R}^+)$ and $\theta_{\mathcal{F}}(0) = 0$. Then (35) takes the form,

$$\|y(t) - x(t)\| \leq \theta_{\mathcal{F}}(\varepsilon) \quad \text{for all } t \in \mathbb{I}.$$

This proves that NIDE (1) has generalized Hyers–Ulam stability of type \mathcal{N} . \square

Remark 5.3 Employing the inequality from Theorem 2.1 (a) to (33) we infer that NIDE (1) has Hyers–Ulam stability as well as generalized Hyers–Ulam stability with

$$\eta \left[1 + \int_{t_0}^T EL_{\mathcal{F}}(s) e_{\alpha}(T, t_0) \Delta s \right]$$

being the HUS constant.

The following example illustrates the results obtained in this section.

Example 5.2 Let

$$\mathbb{T} = \bigcup_{k=0}^{\infty} [2k, 2k + 1]$$

and consider the NIDE

$$x^{\Delta}(t) + x^{\sigma}(t) = L_{\mathcal{F}}(x(t) + 3)^{1/2} + L_{\mathcal{F}} \int_{t_0}^t \frac{x(s)}{1 + x(s)} \Delta s, \quad t \in [t_0, T]_{\mathbb{T}}^{\kappa}, \quad (36)$$

with $x(t_0) = 0$, where

$$L_{\mathcal{F}} \in \left(0, \frac{1}{(2e)^{m+1}(2m+1)(2m+2)} \right). \quad (37)$$

We take $t_0 = 0$, $T = 2m + 1$, $m \in \mathbb{N}$. Here $p(t) \equiv 1$. So $p \in \mathcal{R}$, and (H_1) holds. Moreover,

$$\mathcal{H}(t, s, x) = \frac{x}{1+x} \quad \text{and} \quad \mathcal{F}(t, x, y) = L_{\mathcal{F}}((x+3)^{1/2} + y),$$

Certified as
TRUE COPY

Principal
Ramniranjan Jhunjhunwala College,
Ghatkopar (W), Mumbai-400086.

We note that (H_2) is satisfied, since

$$\begin{aligned} & |\mathcal{F}(t, x_1(t), y_1(t)) - \mathcal{F}(t, x_2(t), y_2(t))| \\ &= L_{\mathcal{F}} \left(\left| (x_1(t) + 3)^{1/2} - (x_2(t) + 3)^{1/2} \right| + |y_1(t) - y_2(t)| \right) \end{aligned}$$

and, by [7, Corollary 1.68], we can write

$$\begin{aligned} & |\mathcal{F}(t, x_1(t), y_1(t)) - \mathcal{F}(t, x_2(t), y_2(t))| \\ &\leq L_{\mathcal{F}} \left(\sup_{z \in \mathbb{R}} \left| \frac{z}{(z^2 + 3)^{1/2}} \right| |x_1(t) - x_2(t)| + |y_1(t) - y_2(t)| \right) \\ &\leq L_{\mathcal{F}} (|x_1 - x_2| + |y_1 - y_2|). \end{aligned}$$

Also,

$$\begin{aligned} |\mathcal{H}(t, s, x_1(s)) - \mathcal{H}(t, s, x_2(s))| &= \left| \frac{x_1(s)}{1 + x_1(s)} - \frac{x_2(s)}{1 + x_2(s)} \right| \\ &= \left| \frac{x_1(s) - x_2(s)}{(1 + x_1(s))(1 + x_2(s))} \right| \\ &\leq |x_1(s) - x_2(s)|. \end{aligned}$$

Hence, (H_3) is satisfied with $L_{\mathcal{H}} = 1$. Further, since

$$\eta = \sup_{t \in [0, 2m+1]_{\mathbb{T}}} \int_0^t e_{\ominus 1}(t, s) \Delta s = (2e)^{m+1} (2m + 1),$$

we find that (H_4) is satisfied with $L_{\mathcal{H}} = 1$ and $L_{\mathcal{F}}$ given in (37). Therefore, all the conditions of Theorem 3.2 are satisfied. Hence, NIDE (36) has a unique solution. In fact, by Lemma 3.1, this unique solution is given by

$$x(t) = L_{\mathcal{F}} \int_0^t e_{\ominus 1}(t, s) \left((x(s) + 3)^{1/2} + \int_0^s \frac{x(\tau)}{1 + x(\tau)} \Delta \tau \right) \Delta s.$$

Further, if $y \in C_{\text{rd}}^1([0, 2m + 1]_{\mathbb{T}}, \mathbb{R})$ satisfies

$$\left| y^{\Delta}(t) + y^{\sigma}(t) - L_{\mathcal{F}}(y(t) + 3)^{1/2} - \int_0^t \frac{y(s)}{1 + y(s)} \Delta s \right| \leq \varepsilon,$$

then by Corollary 5.2, there exists a solution x of NIDE (36) satisfying

$$|y(t) - x(t)| \leq \varepsilon (2e)^{m+1} (2m + 1) e_{\alpha}(2m + 1, 0),$$

where $\alpha = (2e)^{m+1} L_{\mathcal{F}} + 1$. Hence, NIDE (36) has Hyers–Ulam stability with HUS constant $(2e)^{m+1} (2m + 1) e_{\alpha}(2m + 1, 0)$. We refer to Fig. 1 for a picture of the solution

**Certified as
TRUE COPY**


Principal

Ramniranjan Jhunjhunwala College,
Ghatkopar (W), Mumbai-400086.

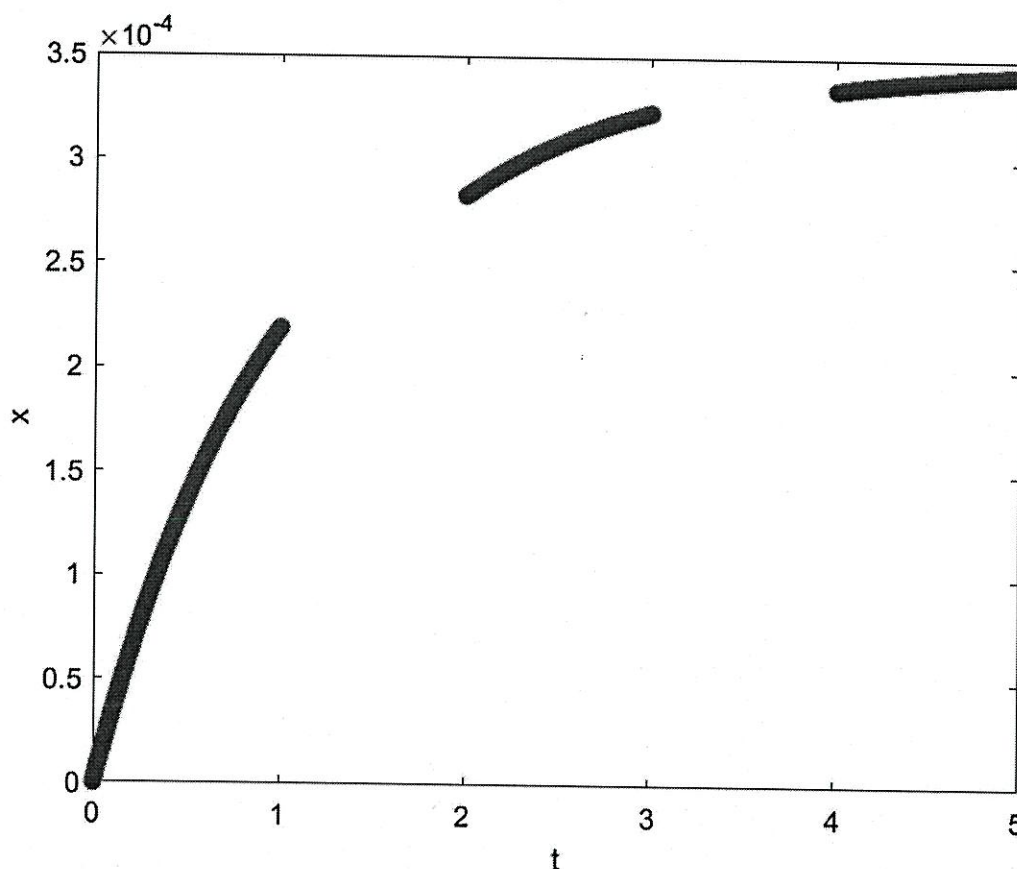


Fig. 1 The solution x of (36) with $m = 2$ and $L_{\mathcal{F}} = 0.0002$

of (36) when $m = 2$ and $L_{\mathcal{F}} = 0.0002$ (which satisfies (37)). As there is no software available to solve such problems on time scales, we explain now how we were able to depict this solution. We used the general-purpose MATLAB® code IDSOLVER by Gelmi and Jorquera [11], with slight modifications, in combination with manual calculations in order to account for the special structure of the time scale. To begin with, we replaced the last line in the IDSOLVER with

$$\begin{aligned} dy(n) = & c(x, y(1)) + d(x) * \text{quad1}(@ (s) \\ & k(x, s) .* ys(s) ./ (1 + ys(s)), \alpha(x), \beta(x), \text{TolQuad}); \end{aligned}$$

Step 1

First, we solved (36) on $[0, 1]$, with the initial condition $x(0) = 0$, using the code

```
xinterval = [01];
n = 1;
InitCond = 0;
c = @(x,y)0.0002.*sqrt(y+3)-y;
d = @(x)1;
```

**Certified as
TRUE COPY**

Principal

**Ramniranjan Jhunjhunwala College,
Ghatkopar (W), Mumbai-400086.**


```

k = @(x, s)0.0002;
alpha = @(x)0;
beta = @(x)x;
Tol = 1e - 30;
Flag = 0;
idsolver(xinterval, n, InitCond, c, d, k, alpha, beta, Tol, Flag)

```

This produced the left part of the graph in Fig. 1, as well as the values

$$\begin{aligned}
 x(1) &\approx 0.000218985443791 =: \xi_1, \\
 x(1^-) &\approx 0.000218972695594 =: \xi_1^- \quad \text{with } 1^- := 0.999899989999,
 \end{aligned}$$

which were used to approximate

$$\begin{aligned}
 \lambda_1 &:= \int_0^1 \frac{x(s)}{1+x(s)} \Delta s \approx 5000 \left(\xi_1 + \frac{\xi_1 - \xi_1^-}{1 - 1^-} \right) - \sqrt{\xi_1 + 3} \\
 &\approx 0.00015930590286625453724869533495221.
 \end{aligned}$$

Step 2

Next, we manually solved (36) for $t = 1$, with the initial condition $x(1) = \xi_1$, so

$$\begin{aligned}
 x(2) &= \frac{\xi_1 + 0.0002(\sqrt{\xi_1 + 3} + \lambda_1)}{2} \\
 &\approx 0.00028272005469256373461090156373461 =: \xi_2.
 \end{aligned}$$

Step 3

Next, we solved (36) on $[2, 3]$, i.e.,

$$x'(t) + x(t) = 0.0002\sqrt{x(t) + 3} + 0.0002\lambda_2 + 0.0002 \int_2^t \frac{x(s)}{1+x(s)} ds,$$

where

$$\begin{aligned}
 \lambda_2 &:= \int_0^2 \frac{x(s)}{1+x(s)} \Delta s = \lambda_1 + \frac{\xi_1}{1 + \xi_1} \\
 &\approx 0.00037824340253172780167184558590068,
 \end{aligned}$$

with the initial condition $x(2) = \xi_2$, using the same code as in Step 1, with obvious modifications in lines 1, 3, 4, and 7. This produced the middle part of the graph in Figure 1, as well as the values

$$\begin{aligned}
 x(3) &\approx 0.000323061106953 =: \xi_3, \\
 x(3^-) &\approx 0.000323058756143 =: \xi_3^- \quad \text{with } 3^- := 2.999899989999,
 \end{aligned}$$

**Certified as
TRUE COPY**


Principal
Ramniranjan Jhunjhunwala College,
Ghatkopar (W), Mumbai-400086.

which were used to approximate

$$\begin{aligned}\lambda_3 &:= \int_0^3 \frac{x(s)}{1+x(s)} \Delta s = \lambda_2 + \int_2^3 \frac{x(s)}{1+x(s)} \Delta s \\ &\approx 5000 \left(\xi_3 + \frac{\xi_3 - \xi_3^-}{3 - 3^-} \right) - \sqrt{\xi_3 + 3} \\ &\approx 0.00069021594828844142473145045426559.\end{aligned}$$

Step 4

Next, we manually solved (36) for $t = 3$, with the initial condition $x(3) = \xi_3$, so

$$\begin{aligned}x(4) &= \frac{\xi_3 + 0.0002(\sqrt{\xi_3 + 3} + \lambda_3)}{2} \\ &\approx 0.00033481398154801175287459501175287 =: \xi_4.\end{aligned}$$

Step 5

Next, we solved (36) on $[4, 5]$, i.e.,

$$x'(t) + x(t) = 0.0002\sqrt{x(t) + 3} + 0.0002\lambda_4 + 0.0002 \int_4^t \frac{x(s)}{1+x(s)} ds,$$

where

$$\begin{aligned}\lambda_4 &:= \int_0^4 \frac{x(s)}{1+x(s)} \Delta s = \lambda_3 + \frac{\xi_3}{1+\xi_3} \\ &\approx 0.00101317272046912276598162442032,\end{aligned}$$

with the initial condition $x(4) = \xi_4$, using the same code as in Step 1, with obvious modifications in lines 1, 3, 4, and 7. This produced the right part of the graph in Figure 1.

6 Concluding Remark

A new type of nonlinear integro-dynamic equations on time scales (1) was considered and several qualitative results are derived in an effective way. We have derived the existence of the solution of this equation using the fixed point theorem of Krasnoselskiĭ. The uniqueness of solution, dependence of solutions on various data, and Ulam stability are investigated mainly employing Gronwall-type dynamic inequalities. To illustrate the applicability of the main results of this paper, we have provided three examples on a nonstandard time scale domain. As there is no software available to solve such types of integro-dynamic equations on time scales, we rewrote a MATLAB® code from the literature, ran this code for one of the examples with some manual calculations, and then plotted the solution. The results obtained in this paper

Certified as
TRUE COPY

Principal

Ramniranjan Jhunjhunwala College,
Ghatkopar (W), Mumbai-400086.

are new, original, and could be useful tools for researchers working in related areas. Moreover, we emphasize that other qualitative properties like oscillation and nonoscillation, asymptotic behaviour, and controllability of solutions would be an interesting topics for future research.

Acknowledgements The authors thank both referees for carefully reading this manuscript and making many important and insightful suggestions, which helped to improve the paper considerably. The research work of Sanket Tikare is a part of the seed grant MRP (Ref. No. 886/13122021) of Ramniranjan Jhunjunwala College, Mumbai, India.

Author Contributions All authors contributed equally and significantly in preparing and writing this article. All authors read and approved the final manuscript.

Data availability Data sharing not applicable to this article as no datasets were generated or analysed during the current study.


Declarations

Conflict of interest The authors declare that there is no competing interests regarding the publication of this article.

References

1. Acosta, S., Palacios, B.: Thermoacoustic tomography for an integro-differential wave equation modeling attenuation. *J. Differ. Equ.* **264**(3), 1984–2010 (2018)
2. Adivar, M., Koyuncuoğlu, H.C., Raffoul, Y.N.: Classification of positive solutions of nonlinear systems of Volterra integro-dynamic equations on time scales. *Commun. Appl. Anal.* **16**(3), 359–375 (2012)
3. Adivar, M., Raffoul, Y.N.: Existence results for periodic solutions of integro-dynamic equations on time scales. *Ann. Mat. Pura Appl.* (4) **188**(4), 543–559 (2009)
4. Adivar, M., Raffoul, Y.N.: Necessary and sufficient conditions for uniform stability of Volterra integro-dynamic equations using new resolvent equation. *An. Ştiinţ. Univ. “Ovidius” Constanţa Ser. Mat.*, **21**(3), 17–32 (2013)
5. An, T.V., Hoa, N.V.: Fuzzy differential equations with Riemann–Liouville generalized fractional integrable impulses. *Fuzzy Sets Syst.* **429**, 74–100 (2022)
6. Belkina, T.A., Konyukhova, N.B., Kurochkin, S.V.: Dynamical insurance models with investment: constrained singular problems for integrodifferential equations. *Comput. Math. Math. Phys.* **56**(1), 43–92 (2016)
7. Bohner, M., Peterson, A.: Dynamic equations on time scales. In: An introduction with applications. Birkhäuser Boston, Inc., Boston (2001)
8. Bohner, M., Peterson, A.: *Advances in Dynamic Equations on Time Scales*. Birkhäuser Boston Inc, Boston (2003)
9. Bohner, M., Tikare, S., dos Santos, I.L.D.: First-order nonlinear dynamic initial value problems. *Int. J. Dyn. Syst. Differ. Equ.* **11**(3–4), 241–254 (2021)
10. Castro, L.F.P., Simões, A.M.: Different types of Hyers–Ulam–Rassias stabilities for a class of integro-differential equations. *Filomat* **31**(17), 5379–5390 (2017)
11. Gelmi, C.A., Jorquera, H.: IDSOLVER: a general purpose solver for n th-order integro-differential equations. *Comput. Phys. Commun.* **185**(1), 392–397 (2014)
12. Ho, V., Ngo, V.H.: Non-instantaneous impulses interval-valued fractional differential equations with Caputo–Katugampola fractional derivative concept. *Fuzzy Sets Syst.* **404**, 111–140 (2021)
13. Jain, H.V., Byrne, H.M.: Qualitative analysis of an integro-differential equation model of periodic chemotherapy. *Appl. Math. Lett.* **25**(12), 2132–2136 (2012)
14. Janfada, M., Sadeghi, G.: Stability of the Volterra integrodifferential equation. *Folia Math.* **18**(1), 11–20 (2013)

Certified as
TRUE COPY


Principal
Ramniranjan Jhunjunwala College,
Ghatkopar (W), Mumbai-400086.

15. Kucche, K.D., Shikhare, P.U.: Ulam–Hyers stability of integrodifferential equations in Banach spaces via Pachpatte’s inequality. *Asian-Eur. J. Math.*, **11**(4), 1850062, 19 (2018)
16. Li, J., Brauer, F.: Continuous-time age-structured models in population dynamics and epidemiology. In: *Mathematical Epidemiology*, Volume 1945 of *Lecture Notes in Math.*, pp. 205–227. Springer, Berlin (2008)
17. Li, W.-T., Raffoul, Y.N.: Classification and existence of positive solutions of systems of Volterra nonlinear difference equations. *Appl. Math. Comput.* **155**(2), 469–478 (2004)
18. Liu, G., Xiang, X., Peng, Y.: Nonlinear integro-differential equations and optimal control problems on time scales. *Comput. Math. Appl.* **61**(2), 155–169 (2011)
19. Lupulescu, V., Ntouyas, S.K., Younus, A.: Qualitative aspects of a Volterra integro-dynamic system on time scales. *Electron. J. Qual. Theory Differ. Equ.* **5**, 35 (2013)
20. Van Ngo, H., Ho, V.: A survey on the initial value problems of fuzzy implicit fractional differential equations. *Fuzzy Sets Syst.* **400**, 90–133 (2020)
21. Pata, V.: *Fixed Point Theorems and Applications*, Volume 116 of *Unitext*. Springer, Cham (2019). *La Matematica per il 3+2*
22. Pham, H., Tankov, P.: A coupled system of integrodifferential equations arising in liquidity risk model. *Appl. Math. Optim.* **59**(2), 147–173 (2009)
23. Raffoul, Y.N.: Classification of positive solutions of nonlinear systems of Volterra integral equations. *Ann. Funct. Anal.* **2**(2), 34–41 (2011)
24. Raffoul, Y.N.: Necessary and sufficient conditions for stability of Volterra integro-dynamic equation on time scales. *Arch. Math. (Brno)* **52**(1), 21–33 (2016)
25. Rodríguez, N.: On an integro-differential model for pest control in a heterogeneous environment. *J. Math. Biol.* **70**(5), 1177–1206 (2015)
26. Şevgin, S., Şevli, H.: Stability of a nonlinear Volterra integro-differential equation via a fixed point approach. *J. Nonlinear Sci. Appl.* **9**(1), 200–207 (2016)
27. Sevinik-Adı güzel, R., Karapınar, E., Erhan, İ.M.: A solution to nonlinear Volterra integro-dynamic equations via fixed point theory. *Filomat*, **33**(16), 5331–5343 (2019)
28. Shah, S.O., Zada, A.: Existence, uniqueness and stability of solution to mixed integral dynamic systems with instantaneous and noninstantaneous impulses on time scales. *Appl. Math. Comput.* **359**, 202–213 (2019)
29. Shah, S.O., Zada, A.: On the stability analysis of non-linear Hammerstein impulsive integro-dynamic system on time scales with delay. *Punjab Univ. J. Math. (Lahore)* **51**(7), 89–98 (2019)
30. Shah, S.O., Zada, A.: The Ulam stability of non-linear Volterra integro-dynamic equations on time scales. *Note Mat.* **39**(2), 57–69 (2019)
31. Shah, S.O., Zada, A., Hamza, A.E.: Stability analysis of the first order non-linear impulsive time varying delay dynamic system on time scales. *Qual. Theory Dyn. Syst.* **18**(3), 825–840 (2019)
32. Shah, S.O., Zada, A., Muzamil, M., Tayyab, M., Rizwan, R.: On the Bielecki–Ulam’s type stability results of first order non-linear impulsive delay dynamic systems on time scales. *Qual. Theory Dyn. Syst.*, **19**(3), Paper No. 98, 18 (2020)
33. Shah, S.O., Zada, A., Tunç, C., Ali, A.: Bielecki–Ulam–Hyers stability of non-linear Volterra impulsive integro-delay dynamic systems on time scales. *Punjab Univ. J. Math. (Lahore)* **53**(5), 339–349 (2021)
34. Singh, V.K., Postnikov, E.B.: Operational matrix approach for solution of integro-differential equations arising in theory of anomalous relaxation processes in vicinity of singular point. *Appl. Math. Model.* **37**(10–11), 6609–6616 (2013)
35. Vu, H., Van Hoa, N.: Ulam–Hyers stability for a nonlinear Volterra integro-differential equation. *Hacet. J. Math. Stat.* **49**(4), 1261–1269 (2020)
36. Vu, H., Van Hoa, N.: Hyers–Ulam stability of fuzzy fractional Volterra integral equations with the kernel ψ -function via successive approximation method. *Fuzzy Sets Syst.* **419**, 67–98 (2021)
37. Wong, F.-H., Yeh, C.-C., Hong, C.-H.: Gronwall inequalities on time scales. *Math. Inequal. Appl.* **9**(1), 75–86 (2006)
38. Xing, Y., Han, M., Zheng, G.: Initial value problem for first-order integro-differential equation of Volterra type on time scales. *Nonlinear Anal.* **60**(3), 429–442 (2005)
39. Younus, A., O’Regan, D., Yasmin, N., Mirza, S.: Stability criteria for nonlinear Volterra integro-dynamic systems. *Appl. Math. Inf. Sci.* **11**(5), 1509–1517 (2017)
40. Younus, A., ur Rahman, G.: Controllability, observability, and stability of a Volterra integro-dynamic system on time scales. *J. Dyn. Control Syst.* **20**(3), 383–402 (2014)

**Certified as
TRUE COPY**



Principal

**Ramniranjan Jhunjunwala College,
Ghatkopar (W), Mumbai-400086.**

41. Zada, A., Shah, S.O.: Hyers-Ulam stability of first-order non-linear delay differential equations with fractional integrable impulses. *Hacet. J. Math. Stat.* **47**(5), 1196–1205 (2018)
42. Zhu, Z.-Q., Wang, Q.-R.: Existence of nonoscillatory solutions to neutral dynamic equations on time scales. *J. Math. Anal. Appl.* **335**(2), 751–762 (2007)

Publisher's Note Springer Nature remains neutral with regard to jurisdictional claims in published maps and institutional affiliations.

**Certified as
TRUE COPY**


Principal
Ramniranjan Jhunjhunwala College,
Ghatkopar (W), Mumbai-400086.