





# R. J. COLLEGE of Arts, Science & Commerce (Empowered Autonomous)

(Hindi Vidya Prachar Samiti's RAMNIRANJAN JHUNJHUNWALA COLLEGE of Arts, Science & Commerce)

Opposite Ghatkopar Railway Station, Ghatkopar (West), Mumbai - 400086, Maharashtra, INDIA.

Website: www.rjcollege.edu.in • Email : rjcollege@rjcollege.edu.in • Tel No. + 91 22 25151763

College is recognized under Section 2(f) & 12(B) of the UGC Act, 1956

Affiliated to UNIVERSITY OF MUMBAI || NAAC Re-Accredited 'A' Grade (CGPA: 3.10)

Year 2023 – 2024

Report Of NSS Unit Activity

## Flyer



HINDI VIDYA PRACHAR SAMITI'S  
Ramniranjan Jhunjhunwala College Ghatkopar (W)  
(Empowered Autonomous)



# NSS UNIT

volunteered in

# JOB FAIR

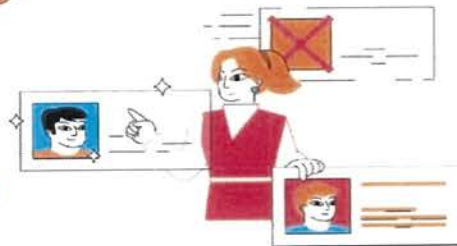
organised by

## RJC PLACEMENT CELL

**Date: 16th January 2024**

**Time: 10:30 am onwards**

**Venue: MPSS Hall, RJ College**



PRINCIPAL

RAMNIRANJAN JHUNJHUNWALA COLLEGE  
OF ARTS, SCIENCE & COMMERCE (AUTONOMOUS)  
Ghatkopar (W), Mumbai-400 086, Maharashtra, INDIA

2019: Star College Status by DBT

2008: Best College by University of Mumbai 2010: IMC RBNQ Award 'Performance Excellence' for the year 2009

2011: 'Best Teacher Award' by Government of Maharashtra 2013: DST-FIST 2014: DBT STAR College

2013 & 2014: 'Jagar Jaanivancha Award' by Govt, of Maharashtra 2016: ISO 14001:2015 2016: ISO 9001:2015 2017: ISO 27001:2013



# R. J. COLLEGE of Arts, Science & Commerce (Empowered Autonomous)

(Hindi Vidya Prachar Samiti's **RAMNIRANJAN JHUNJHUNWALA COLLEGE of Arts, Science & Commerce**)

Opposite Ghatkopar Railway Station, Ghatkopar (West), Mumbai - 400086, Maharashtra, INDIA.

Website: [www.rjcollege.edu.in](http://www.rjcollege.edu.in) • Email : [rjcollege@rjcollege.edu.in](mailto:rjcollege@rjcollege.edu.in) • Tel No. + 91 22 25151763

College is recognized under Section 2(f) & 12(B) of the UGC Act, 1956

Affiliated to **UNIVERSITY OF MUMBAI** || **NAAC Re-Accredited 'A' Grade (CGPA: 3.10)**

## Photos of Job Fair Organized by RJC Placement Cell 16<sup>th</sup> January 2024



## Candidates for the job fair



## Interview of candidates & group photo of interviewers with candidates



**PRINCIPAL**  
**RAMNIRANJAN JHUNJHUNWALA COLLEGE**  
**OF ARTS, SCIENCE & COMMERCE (AUTONOMOUS)**  
 Ghatkopar (W), Mumbai-400 086, Maharashtra, INDIA

2019: Star College Status by DBT

2008: Best College by University of Mumbai 2010: IMC RBNQ Award 'Performance Excellence' for the year 2009

2011: 'Best Teacher Award' by Government of Maharashtra 2013: DST-FIST 2014: DBT STAR College

2013 & 2014: 'Jagur Jaanivancha Award' by Govt, of Maharashtra 2016: ISO 14001:2015 2016: ISO 9001:2015 2017: ISO 27001:2013



# R. J. COLLEGE of Arts, Science & Commerce (Empowered Autonomous)

(Hindi Vidya Prachar Samiti's **RAMNIRANJAN JHUNJHUNWALA COLLEGE of Arts, Science & Commerce**)

Opposite Ghatkopar Railway Station, Ghatkopar (West), Mumbai - 400086, Maharashtra, INDIA.

Website: www.rjcollege.edu.in • Email : rjcollege@rjcollege.edu.in • Tel No. + 91 22 25151763

College is recognized under Section 2(f) & 12(B) of the UGC Act, 1956

Affiliated to UNIVERSITY OF MUMBAI || NAAC Re-Accredited 'A' Grade (CGPA: 3.10)

## Report

**Name of the event:** Placement drive

**Organized by:** NSS unit of RJ College

**Day and date:** 16 January 2024

**Time:** 09:00 am to 01:00 pm

**Venue:** MPSS Hall, R.J. College

**Objective of the Activity:** The placement drive on 16th January 2024 organized by the NSS unit aims to provide discipline and management

### UN SDG

**1.SDG 4:** Quality Education: Placement often aims to connect students with employment opportunities that align with their educational background and career aspirations. By facilitating job placements, these drives support the goal of ensuring inclusive and equitable quality education and promoting lifelong learning opportunities for all.

**2.SDG 8:** Decent Work and Economic Growth: By helping individuals secure gainful employment, placement drives contribute to promoting sustained, inclusive, and sustainable economic growth, as well as full and productive employment and decent work for all. They also play a role in reducing unemployment and underemployment, particularly among young people.

**3.SDG 10:** Reduced Inequalities: Placement drives can help address inequalities by providing equal access to employment opportunities for all individuals, regardless of their background, gender, ethnicity, or socio-economic status. They promote fair recruitment practices and help bridge the gap between job seekers and employers.

**4.SDG 17:** Partnerships for the Goals: Collaboration between educational institutions, employers, government agencies, and other stakeholders is essential for the success of placement drives. By fostering partnerships and cooperation, these drives strengthen the overall ecosystem for employment and contribute to achieving sustainable development goals.

**Brief description:** A Placement Drive is an organized event typically conducted by educational institutions or companies with the aim of connecting students or job seekers with potential employers. During these events, employers set up booths or recruitment stations where they interact with candidates, conduct interviews, and evaluate resumes.



2019: Star College Status by DBT

2008: Best College by University of Mumbai 2010: IMC RBNQ Award 'Performance Excellence' for the year 2009

2011: 'Best Teacher Award' by Government of Maharashtra 2013: DST-FIST 2014: DBT STAR College

2015: Happy Teachers Award by Govt. of Maharashtra 2016: ISO 14001:2015 2016: ISO 9001:2015 2017: ISO 27001:2013

PRINCIPAL  
RAMNIRANJAN JHUNJHUNWALA COLLEGE  
OF ARTS, SCIENCE & COMMERCE (AUTONOMOUS)  
Ghatkopar (W), Mumbai-400 086, Maharashtra, INDIA



# R. J. COLLEGE of Arts, Science & Commerce (Empowered Autonomous)

(Hindi Vidya Prachar Samiti's **RAMNIRANJAN JHUNJHUNWALA COLLEGE of Arts, Science & Commerce**)

Opposite Ghatkopar Railway Station, Ghatkopar (West), Mumbai - 400086, Maharashtra, INDIA.

Website: [www.rjcollege.edu.in](http://www.rjcollege.edu.in) • Email : [rjcollege@rjcollege.edu.in](mailto:rjcollege@rjcollege.edu.in) • Tel No. + 91 22 25151763

*College is recognized under Section 2(f) & 12(B) of the UGC Act, 1956*

**Affiliated to UNIVERSITY OF MUMBAI || NAAC Re-Accredited 'A' Grade (CGPA: 3.10)**

The key components of a Placement Drive include:

**Preparation:** Educational institutions or companies plan and organize the event well in advance, inviting participating employers, promoting the event among students or job seekers, and coordinating logistics such as venue selection and scheduling.

**Participation:** Students or job seekers interested in employment opportunities attend the placement drive, often submitting their resumes or applications beforehand and preparing for interviews or networking opportunities.

**Interaction:** Employers and recruiters engage with candidates through various activities such as one-on-one interviews, group discussions, or presentations about their organizations and available job positions.

**Evaluation:** Employers assess candidates based on their qualifications, skills, and suitability for the available job roles. Candidates may undergo multiple rounds of interviews or assessments depending on the recruitment process.

**Selection:** Employers select candidates who meet their requirements and offer them employment opportunities, which may include internships, full-time positions, or training programs.

**Follow-up:** After the placement drive, employers communicate with selected candidates to finalize job offers, negotiate terms, and provide necessary onboarding information. Candidates may also follow up with employers for feedback or additional information.

Overall, a placement drive serves as a platform for bridging the gap between students or job seekers and potential employers, facilitating the recruitment process, and providing opportunities for employment and career advancement. It plays a crucial role in supporting workforce development, talent acquisition, and economic growth.

10 students' participants in the session

**NSS Volunteer: 10**



**PRINCIPAL**  
RAMNIRANJAN JHUNJHUNWALA COLLEGE  
OF ARTS, SCIENCE & COMMERCE (AUTONOMOUS)  
Ghatkopar (W), Mumbai-400 086, Maharashtra, INDIA

**2019: Star College Status by DBT**

**2008: Best College by University of Mumbai 2010: IMC RBNQ Award 'Performance Excellence' for the year 2009**

**2011: 'Best Teacher Award' by Government of Maharashtra 2013: DST-FIST 2014: DBT STAR College**

**2013 & 2014: 'Jaar Jaanivancha Award' by Govt. of Maharashtra 2016: ISO 14001:2015 2016: ISO 9001:2015 2017: ISO 27001:2013**





# R. J. COLLEGE of Arts, Science & Commerce (Empowered Autonomous)

(Hindi Vidya Prachar Samiti's **RAMNIRANJAN JHUNJHUNWALA COLLEGE of Arts, Science & Commerce**)

Opposite Ghatkopar Railway Station, Ghatkopar (West), Mumbai - 400086, Maharashtra, INDIA.

Website: www.rjcollege.edu.in • Email : rjcollege@rjcollege.edu.in • Tel No. + 91 22 25151763

College is recognized under Section 2(f) & 12(B) of the UGC Act, 1956

Affiliated to UNIVERSITY OF MUMBAI || NAAC Re-Accredited 'A' Grade (CGPA: 3.10)

## Certificate



HINDI VIDYA PRACHAR SAMITI 's  
Ramniranjan Jhunjhunwala College  
Arts, Science & Commerce  
(Empowered Autonomous)





# CERTIFICATE

## OF APPERCIATION

THIS CERTIFICATE IS CERTIFY TO

Tushar Kumavat

in recognition of contribution as a volunteer for the Job fair Held at MPSS HALL RJ College ,on 16th January, 2024, Organized by NSS Unit of RJ College in collaborating with RJC placement.

  
**Prof. Pranali Karnik**  
 Programme officer

  
**Dr. D.B.Singh**  
 Programme officer

  
**Dr. Himanshu Dawda**  
 Principal



**PRINCIPAL**  
RAMNIRANJAN JHUNJHUNWALA COLLEGE  
OF ARTS, SCIENCE & COMMERCE (AUTONOMOUS)  
Ghatkopar (W), Mumbai-400 086, Maharashtra, INDIA.

2019: Star College Status by DBT

2008: Best College by University of Mumbai 2010: IMC RBNQ Award 'Performance Excellence' for the year 2009

2011: 'Best Teacher Award' by Government of Maharashtra 2013: DST-FIST 2014: DBT STAR College

2013 & 2014: 'Jagar Jaanivancha Award' by Govt, of Maharashtra 2016: ISO 14001:2015 2016: ISO 9001:2015 2017: ISO 27001:2013